



LORENZO CASTILLO
VOLUME V

VOLUME V

La colección se inspira en el viaje de un joven británico realizado a través de la Ruta de la Seda durante el siglo XVIII con el reinado de Jorge III. El protagonista de nuestro viaje decide, tras visitar Pompeya y Atenas, seguir hacia la India cruzando por Constantinopla. Necesitado de nuevas fuentes de inspiración, es en India donde las encuentra. Estampados sobre algodón con motivos vegetales, florales y geométricos repetidos rítmicamente.

Sebastián, nombre de nuestro viajero, encuentra además estampados del Lejano Oriente con figuras estampadas sobre fondo oro y bordados en seda multicolor.

Con toda esta información, tomó el camino de vuelta a Londres, esta vez cambiando la ruta por el Mediterráneo con paradas en Sicilia, Nápoles, Córcega y finalmente Menorca, perteneciente a la Corona Británica en aquel momento.

Sebastián quedó impresionado por el aire del Mediterráneo, los olores a higo, limón y lavanda, pero sobre todo por los colores. Todas las gamas de azules, desde el turquesa al indigo, verdes agua, esmeralda y hojas de vid... La arquitectura de Mahón, con sus fachadas blancas de ventanas verdes o de tonos ocre, amarillos, grises y rosas...

Sebastián pensó que los estampados indios que había visto eran demasiado planos, pero que aportándoles el aire del Mediterráneo ganarían en frescor y, por qué no, modernidad.

Así nace la colección Mahón, con la fusión de distintos mundos en influencias; los estampados indios clásicos y los chinos de lacas y sedas bordadas renovados y adaptados al colorido mediterráneo, siempre desde un punto de vista occidental, joven y viajero, como es en nuestro imaginario el aristócrata de ojos azules Sebastián.

This collection was inspired by a Grand Tour trip undertaken by a young Englishman in the 18th century during the reign of King George III. After visiting Pompeii and Athens, he continues on to India through Constantinople and follows along the Silk Road in search of new sources of inspiration that he eventually finds in India: prints on cotton, depicting motifs of plants, flowers and geometrics with a recurring rhythmic pattern.

This traveler called Sebastian also comes across patterns from the Far East featuring figures printed on a golden background, and multi-colored silk embroideries.

On his way back to London, he changed his itinerary and followed the route through the Mediterranean with stays in Sicily, Naples, Corsica and eventually, in Menorca island that belonged to the British Crown at that time.

Sebastian was deeply impressed by the Mediterranean, its air filled with smells of fig and lemon trees, lavenders, but above all, by its colors. A vibrant palette of blues with shades ranging from turquoise to indigo, aquamarine, emerald and vine leaf. The architecture of Mahon, the capital of Menorca island, with its white façades and green, ochre, yellow, grey and rose window frames...

Sebastian thought that the prints he had found in India, looked too flat to him, but could be enhanced with a Mediterranean flair for a fresh, more contemporary feel.

The Mahon collection was created as a fusion of different influences: classic prints from India, Chinese lacquers and embroidered silks, brought up to date and infused with Mediterranean colors, all seen through the eyes of an imaginary traveler from the West - a blue-eyed young aristocrat called Sebastian.









SOFÁ VILNIUS GDM-4966 EN MERES (LCT 1013-014)
ALMOHADONES EN FRUELA Y FAVILA
(LCT 1025-004) Y (LCT 1004-004)

SOFA VILNIUS GDM-4966 IN MERES (LCW 1013-014)
CUSHIONS IN FRUELA AND FAVILA
(LCT 1025-004) AND (LCT 1004-004)







TAPIZADO DE PARED MAUREGATO (LCT 1002-004)
CORTINA EN AUSTEN (LCT 1008-001) Y GRAJAL (LCW 1017-006)

WALL IN MAUREGATO (LCT 1002-004)
CURTAIN IN AUSTEN (LCT 1008-001) AND GRAJAL (LCW 1017-006)



SILLA TAPIZADA EN TRASTAMARA (LCT 1024-001)
FALDA Y SOBRE FALDA MAXIMO (LCT 1015-007) Y YAIZA (LCT 1023-003)



CHAIR IN TRASTAMARA (LCT 1024-001)
SKIRT AND TABLE SKIRT MAXIMO (LCT 1015-007) AND YAIZA (LCT 1023-003)





TAPIZADO DE PARED MAUREGATO (LCT 1002-004)
ALMOHADÓN EN ARAVAQUITA (LCT 1028-005)

WALL IN MAUREGATO (LCT 1002-004)
CUSHION IN ARAVAQUITA (LCT 1028-005)

BIOMBO EN ALTAI (LCT 1031-001)
BUTACA BILLY BALDWIN (GDM-5429) EN GENARO (LCT 1016-001)

BIOMBO IN ALTAI (LCT 1031-001)
BILLY BALDWIN ARMCHAIR (GDM-5429) IN GENARO (LCT 1016-001)



BUTACA EN BERMUDO (LCT 1005-004)
ALMOHADÓN EN MERES (LCT 1013-019)
CORTINA EN TARSILA (LCT 1029-001)

ARMCHAIR IN BERMUDO (LCT 1005-004)
CUSHION IN MERES (LCT 1013-019)
CURTAIN IN TARSILA (LCT 1029-001)







DOSEL EN CAMINO (LCT 1026-001)
ALMOHADONES EN MERES, GRAJAL Y ARAVAQUITA
(LCT 1013-018, LCT 1017-005 Y LCT 1028-001)

CANOPY IN CAMINO (LCT 1026-001)
CUSHIONS IN MERES MERES, GRAJAL AND ARAVAQUITA
(LCT 1013-018, LCT 1017-005 AND LCT 1028-001)





PAPEL DE PARED SALOBREÑA (LCW 1032-001)
ALMOHADONES EN FRUELA Y SEIJO (LCT 1025-002) Y (LCT 1027-002)
COLCHA EN ARAVAQUITA (LCT 1028-002)
DOSEL EN SEIJO Y BERENGUELA (LCT 1027-002) Y (LCT 1030-002)
CABECERO EN ORDOÑO (LCT 1003-001)
CORTINAS EN URRACA Y TRASTAMARA
(LCT 1010- 001) Y (LCT 1024-004)
MESA EN MAUREGATO (LCT 1002-005)

WALLPAPER SALOBREÑA (LCW 1032-001)
CUSHION IN FRUELA AND SEIJO (LCT 1025-002) AND (LCT 1027-002)
THROW IN ARAVAQUITA (LCT 1028-002)
CANOPY IN SEIJO AND BERENGUELA
(LCT 1027-002) AND (LCT 1030-002)
HEADBOARD IN ORDOÑO (LCT 1003-001)
CURTAINS IN URRACA AND TRASTAMARA
(LCT 1010- 001) AND (LCT 1024-004)
SIDE TABLE IN MAUREGATO (LCT 1002-005)



TUMBONA EN TARSILA (LCT 1029-005)

MAT IN TARSILA (LCT 1029-005)





CANAPÉ EN SEIJO (LCT 1027-003)
COJINES EN BEREGUELA, TARSILA Y ARAVAQUITA
(LCT 1030-003, LCT 1029-004 Y LCT 1028-003)

SEATING IN SEIJO (LCT 1027-003)
CUSHIONS IN BEREGUELA, TARSILA AND ARAVAQUITA
(LCT 1030-003, LCT 1029-004 AND LCT 1028-003)



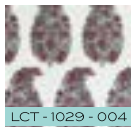
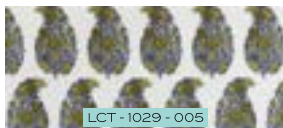
SOFÁ EN TARSILA (LCT 1029-004)
CORTINA EN BRONTE (LCT 1007-001)

SOFA IN TARSILA (LCT 1029-004)
CURTAINS IN BRONTE (LCT 1007-001)





TARSILA



BERENGELA



CAMINO



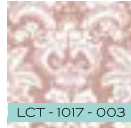
GRAJAL



LCT - 1017 - 001



LCT - 1017 - 002



LCT - 1017 - 003



LCT - 1017 - 004



LCT - 1017 - 005



LCT - 1017 - 006



LCT - 1017 - 007

SEJO



LCT - 1027 - 001



LCT - 1027 - 002



LCT - 1027 - 003



LCT - 1027 - 004

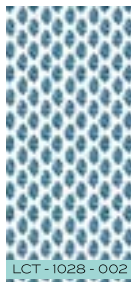


LCT - 1027 - 005

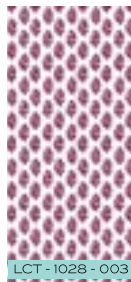
ARAVAQUITA



LCT - 1028 - 001



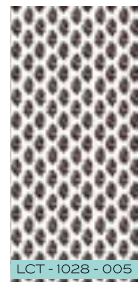
LCT - 1028 - 002



LCT - 1028 - 003



LCT - 1028 - 004

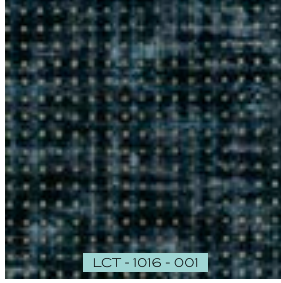


LCT - 1028 - 005

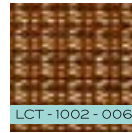
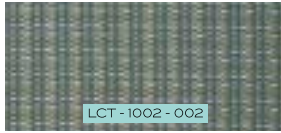
ALTAI



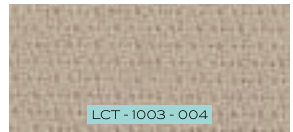
GENARO



MAUREGATO



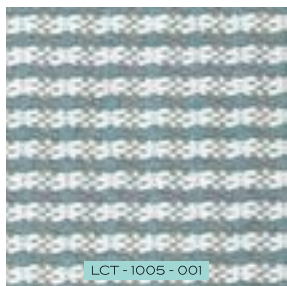
ORDOÑO



FAVILA



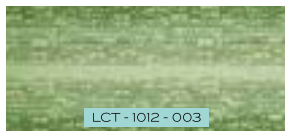
BERMUDO



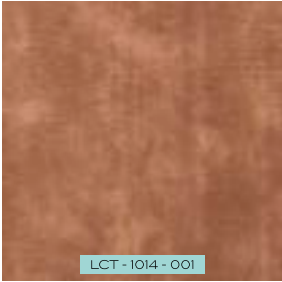
ISHIM



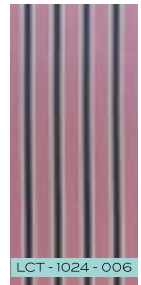
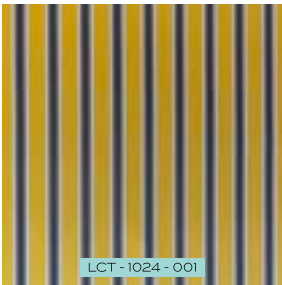
DAMIRCHIK



FROMESTANO



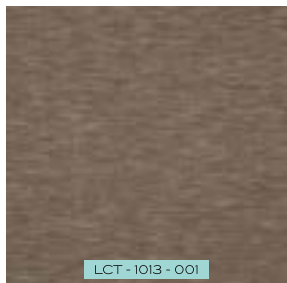
TRASTAMARA



FRUELA



MERES



LCT-1013-001



LCT-1013-002



LCT-1013-003



LCT-1013-004



LCT-1013-005



LCT-1013-006



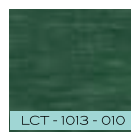
LCT-1013-007



LCT-1013-008



LCT-1013-009



LCT-1013-010



LCT-1013-011



LCT-1013-012



LCT-1013-013



LCT-1013-014



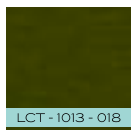
LCT-1013-015



LCT-1013-016



LCT-1013-017



LCT-1013-018



LCT-1013-019



LCT-1013-020



LCT-1013-021



LCT-1013-022



LCT-1013-023



LCT-1013-024



LCT-1013-025



LCT-1013-026

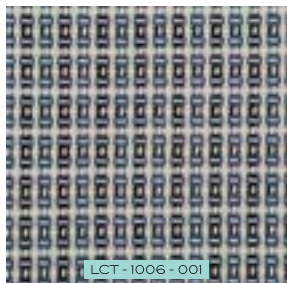


LCT-1013-027

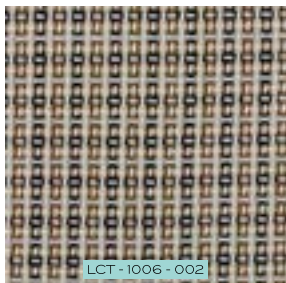


LCT-1013-028

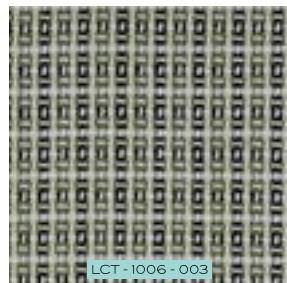
MODESTA



LCT-1006-001

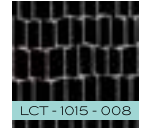
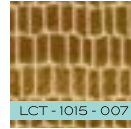
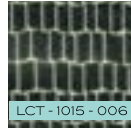
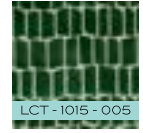
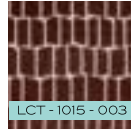
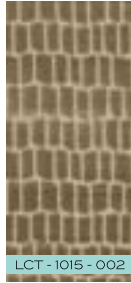
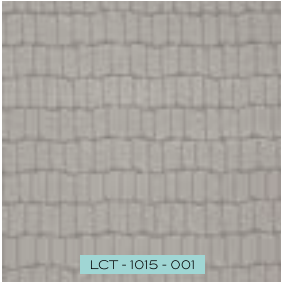


LCT-1006-002



LCT-1006-003

MAXIMO



YAIZA



URRACA

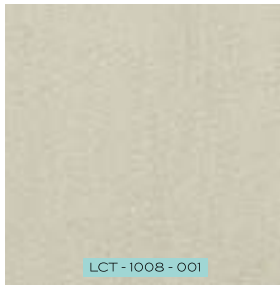
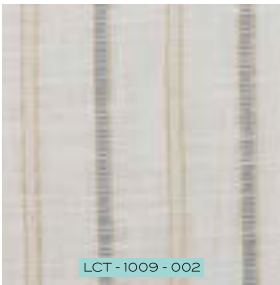


LCT-1010-002

SANCHO



AUSTEN



BRONTE





MUNIA (LCW 1039-001)

LORENZO CASTILLO

MAHÓN
WALLPAPER





VEGACERVERA OCRE (LCW 1033-003)

MECEDORA EN BRONTE (LCT 1007-002)

ROCKING CHAIR IN BRONTE (LCT 1007-002)





PLASENCIA TOPO (LCW 1018-003)





LCW 1034-001 BENACANTIL AZUL
ALMOHADONES EN MAUREGATO (LCT 1002-005) Y (LCT 1002-002)
CUSHIONS IN MAUREGATO (LCT 1002-005) AND (LCT 1002-002)





SALOBREÑA AZUL (LCW 1032-001)

SOFÁ ORLEANS (GDM 4707) EN HABANA (GDT 4939-017)

ORLEANS SOFA (GDM 4707) IN HABANA (GDT 4939-017)





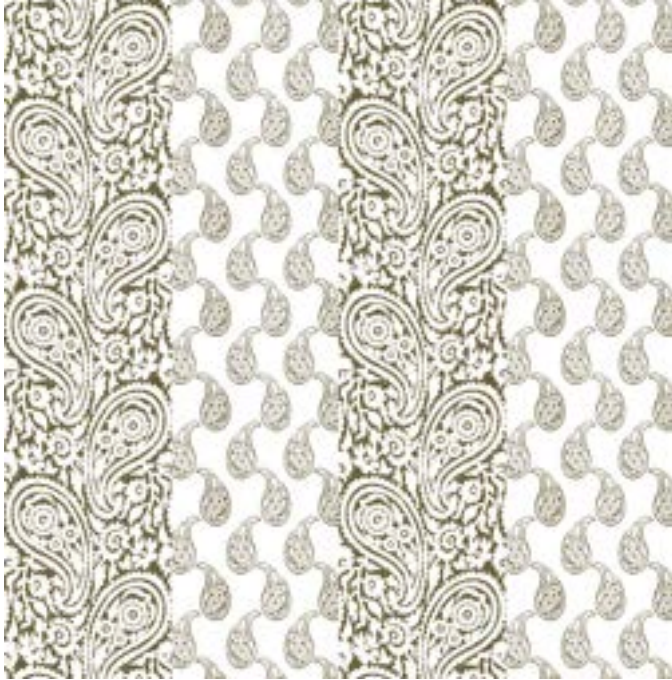
GRAJAL OCRE (LCW 1037-003)

PUFF MILÁN (GDM 2090) EN LAIDI (GDT 5040-001)

MILAN PUFF (GDM 2090) IN LAIDI (GDT 5040-001)







MATUECA TOPO (LCW 1019-003)



LUANCO ROJO (LCW 1021-001)

BUTACA DANIELA (GDM 4806) EN LAREDO (GDT 5068-001)

DANIELA ARMCHAIR (GDM 4806) IN LAREDO (GDT 5068-001)

ALMOHADÓN EN YAIZA (LCT 1023-001)

CUSHION IN YAIZA (LCT 1023-001)

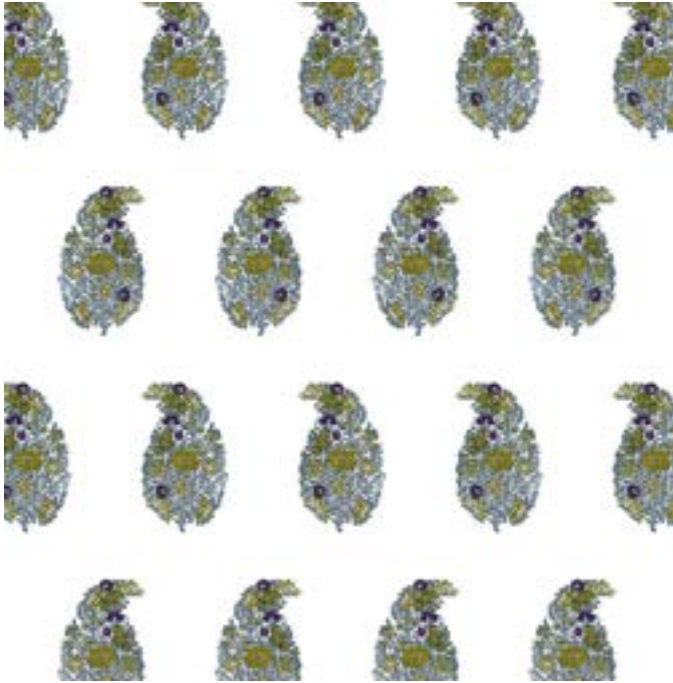




CELORIO AZUL (LCW 1020-002)







TARSILA OCRE/LAVANDA (LCW 1022-004)

SILLA EN TARSILA (LCT 1029-005)

CHAIR IN TARSILA (LCT 1029-005)



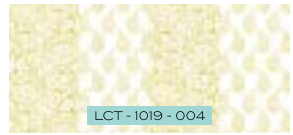
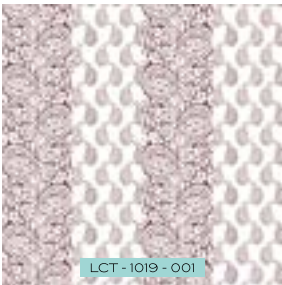


VALJUNCO NARANJA (LCW 1036-002)

PLASENCIA



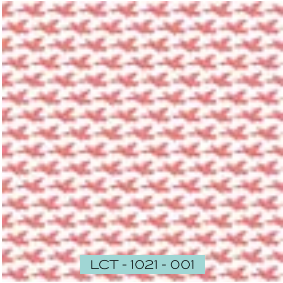
MATUECA



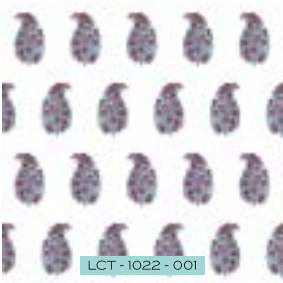
CELORIO



LUANCO



TARSILA



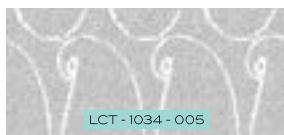
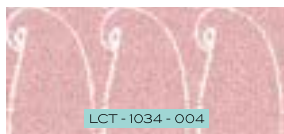
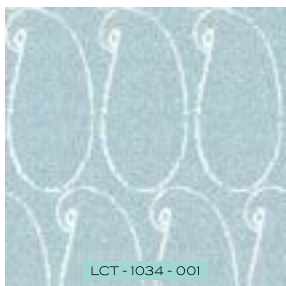
SALOBREÑA



VEGACERVERA



BENACANTIL



SALINAS



VALJUNCO



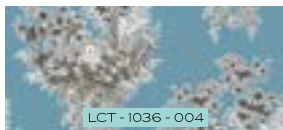
LCT - 1036 - 001



LCT - 1036 - 002



LCT - 1036 - 003



LCT - 1036 - 004



LCT - 1036 - 005

GRAJAL



LCT - 1037 - 001



LCT - 1037 - 002



LCT - 1037 - 003



LCT - 1037 - 004



LCT - 1037 - 005

MUNIA



LCT - 1039 - 001

MAHÓN



LCT - 1040 - 001



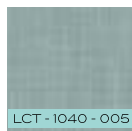
LCT - 1040 - 002



LCT - 1040 - 003



LCT - 1040 - 004



LCT - 1040 - 005



LCT - 1040 - 006



LCT - 1040 - 007

Todos los diseños contenidos en el presente catálogo son propiedad de Gastón y Daniela.
Queda prohibida su reproducción o modificación, total o parcial.
All designs contained in this catalog are the property of Gaston and Daniela.
The total or partial reproduction or modification thereof is strictly prohibited.

