

A photograph of a patterned armchair in a bright, minimalist room. The chair features a complex geometric pattern in shades of blue, yellow, and white on a light-colored fabric. It has dark wooden legs and is positioned in front of a white staircase with decorative balusters. The word 'ICARIA' is overlaid in a large, black, serif font across the center of the image.

# ICARIA

GASTÓN Y DANIELA

DESDE 1876



# ICARIA

---

The ICARIA collection stands as a tribute to the textile history of Anatolia and ancient Greece. The combination of technical skills, artistic design, and the influence of various cultures has contributed to the creation of a textile tradition that is reflected in every design.

Most of its patterns, crafted in linen and cotton, mirror the art of weaving from ancient Greece with refined techniques that elevate the quality of the fabrics. Wonderful designs pay homage to cultural richness with rich colours, geometric and floral motifs.

## ASSOS GDT-5780

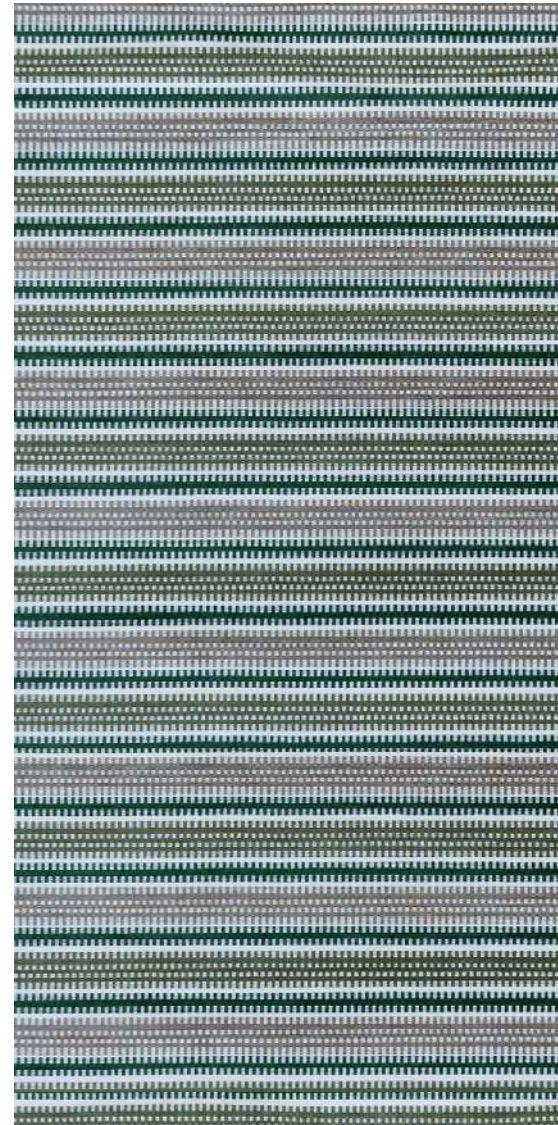
THIS FABRIC FEATURING A STRIPED PATTERN WITH A ZIPPER DESIGN IS THE RESULT OF COMBINING A JACQUARD LOOM WITH THE USE OF HIGH-WEIGHT CHENILLE THREAD, CREATING A BASKET-LIKE APPEARANCE. A PIECE THAT PAYS HOMAGE TO THE CRAFTSMANSHIP OF OTTOMAN CULTURE WITH A SOPHISTICATED COLOUR PALETTE.



GDT-5780-001 ASSOS AZUL/OCRE



GDT-5780-002 ASSOS TOPO/BEIGE



GDT-5780-003 ASSOS VERDE



GDT-5780-004 ASSOS ROJO/AZUL

COMPOSITION: 44% VI / 32% COT / 24% PLY  
HORIZONTAL REPEAT: 0  
WIDTH: 140 CM/55"  
MARTINDALE: 28.000  
CARE CODE:



## MILETO GDT-5778

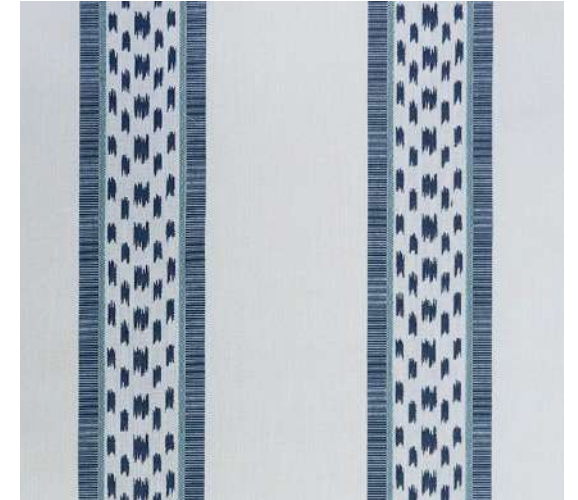
THIS PATTERN COMBINES THE CLASSIC STRIPE DESIGN WITH THE RICHNESS OF ETHNIC MOTIFS, ADDING A TOUCH OF ORIGINALITY AND EXOTICISM TO THE TRADITIONAL STRIPE.



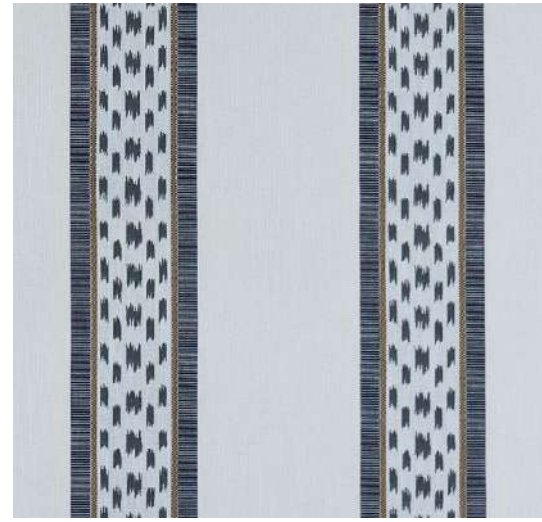
GDT-5778-001 MILETO TEJA



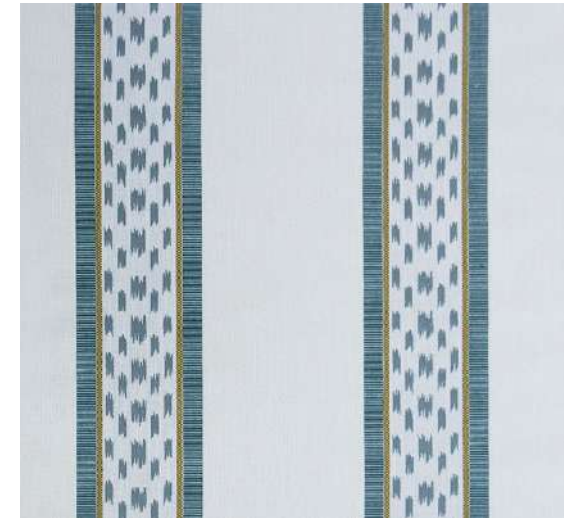
GDT-5778-002 MILETO VERDE




GDT-5778-003 MILETO AZUL



GDT-5778-004 MILETO ANTRACITA



GDT-5778-005 MILETO AGUA/LIMA

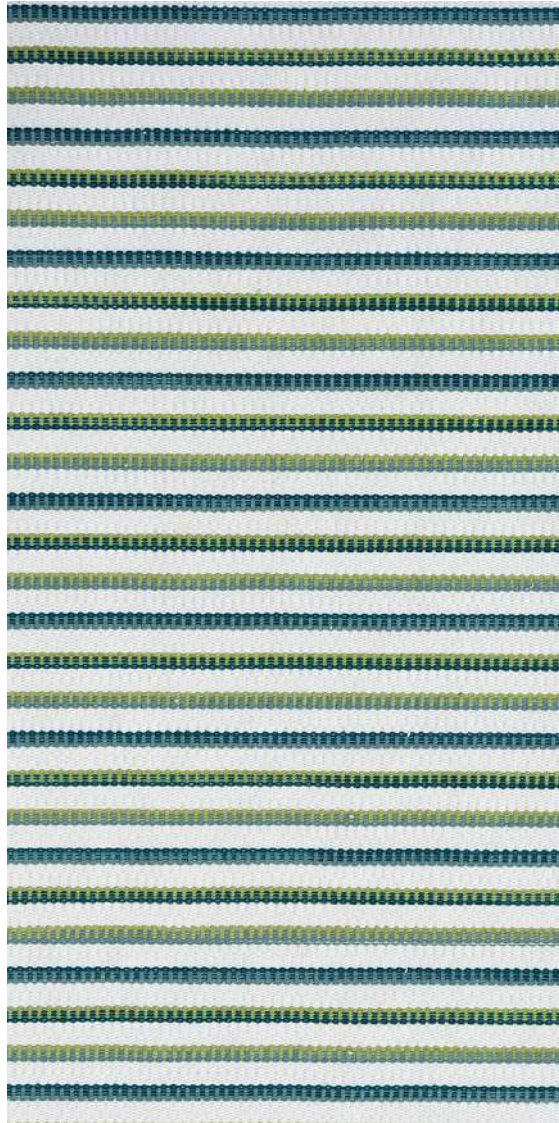
COMPOSITION: 46% COT/ 24% PLY/ 21% VI/ 9% LIN  
VERTICAL REPEAT: 24 CM - 9,45"  
HORIZONTAL REPEAT: 35 CM - 13,79"  
WIDTH: 140 CM/55"  
MARTINDALE: 25.000  
CARE CODE: 



ARMCHAIRS IN MILETO GDT-578

## IZMIR GDT-5781

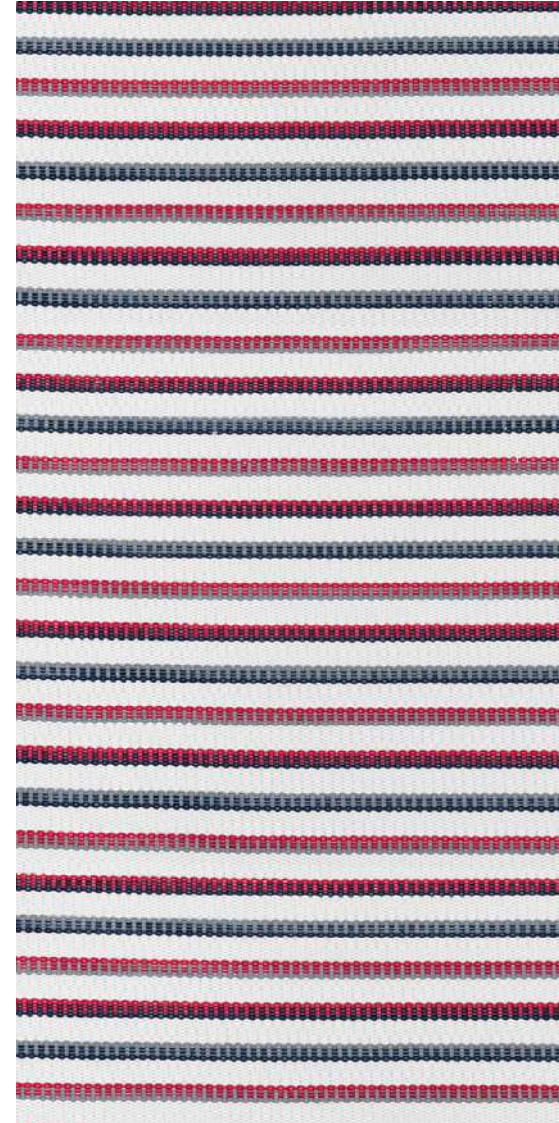
COTTON FABRIC WITH A STRIPED DESIGN, IN WHICH ROPE-LIKE THREADS HAVE BEEN USED FOR ITS CONSTRUCTION THAT EVOKE THE RICH CRAFTSMANSHIP OF THE MEDITERRANEAN.



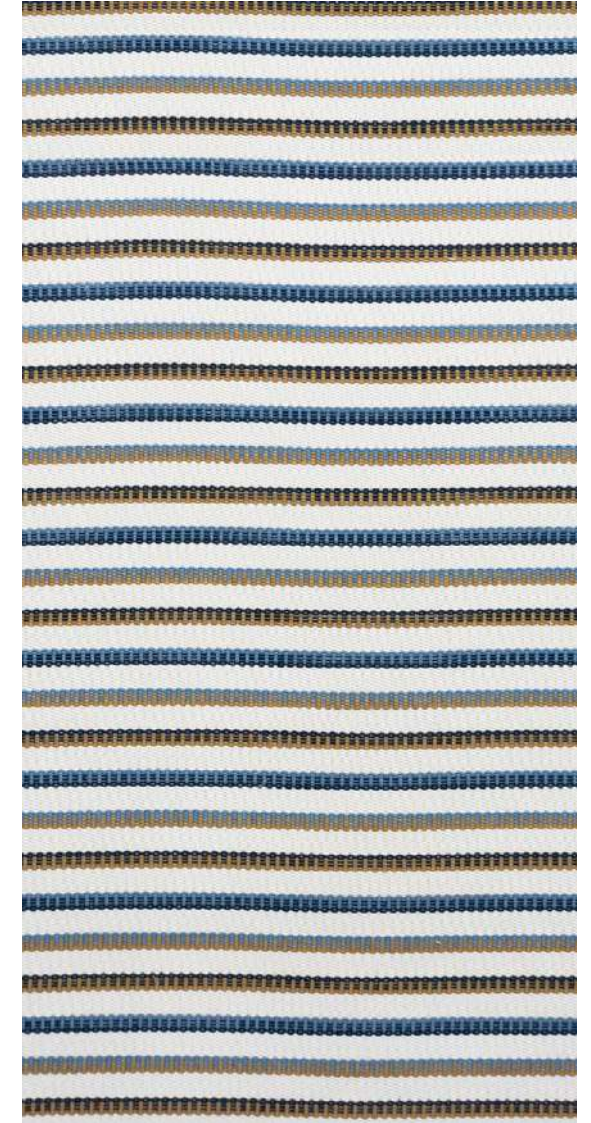
GDT-5781-001 IZMIR VERDE



GDT-5781-002 IZMIR GRIS



GDT-5781-003 IZMIR ROJO/NAVY



GDT-5781-004 IZMIR AZUL/OCRE

COMPOSITION: 80% COT / 20% PLY  
VERTICAL REPEAT: 14 CM - 5,52"  
HORIZONTAL REPEAT: 0  
WIDTH: 140 CM/55" MARTINDALE:  
26.000  
CARE CODE:



ARMCHAIRS IN IZMIR GDT-5781

## ANKARA GDT-5779

COTTON AND LINEN PRINT WITH A FLORAL AND BOTANICAL DESIGN. ITS PATTERN IS INSPIRED BY A TURKISH RUG AND INCORPORATES A CONTEMPORARY COLOUR PALETTE THAT TRANSFORMS ANY SPACE INTO A SOPHISTICATED AND ELEGANT ATMOSPHERE.



GDT-5779-001 ANKARA AZUL/VERDE



GDT-5779-002 ANKARA CHOCOLATE



GDT-5779-003 ANKARA TEJA



GDT-5779-004 ANKARA OCRE

COMPOSITION: 28% VI / 18% LIN / 18% PLY / 16% COT / 12% PC / 8% WV

VERTICAL REPEAT: 68 CM - 26,79"

HORIZONTAL REPEAT: 35 CM - 13,79"

WIDTH: 140 CM / 55"

MARTINDALE: 27.000

CARE CODE: W X A 0



FABRICS IN ANKARA GDT-5779



## EDUARDA GDT-5792

COTTON AND LINEN PRINT WITH A FLORAL AND BOTANICAL DESIGN. ITS PATTERN IS INSPIRED BY A TURKISH RUG AND INCORPORATES A CONTEMPORARY COLOUR PALETTE THAT TRANSFORMS ANY SPACE INTO A SOPHISTICATED AND ELEGANT ATMOSPHERE.



GDT-5792-001 EDUARDA AZUL



GDT-5792-002 EDUARDA VERDE



GDT-5792-003 EDUARDA NAVY



GDT-5792-004 EDUARDA TEJA

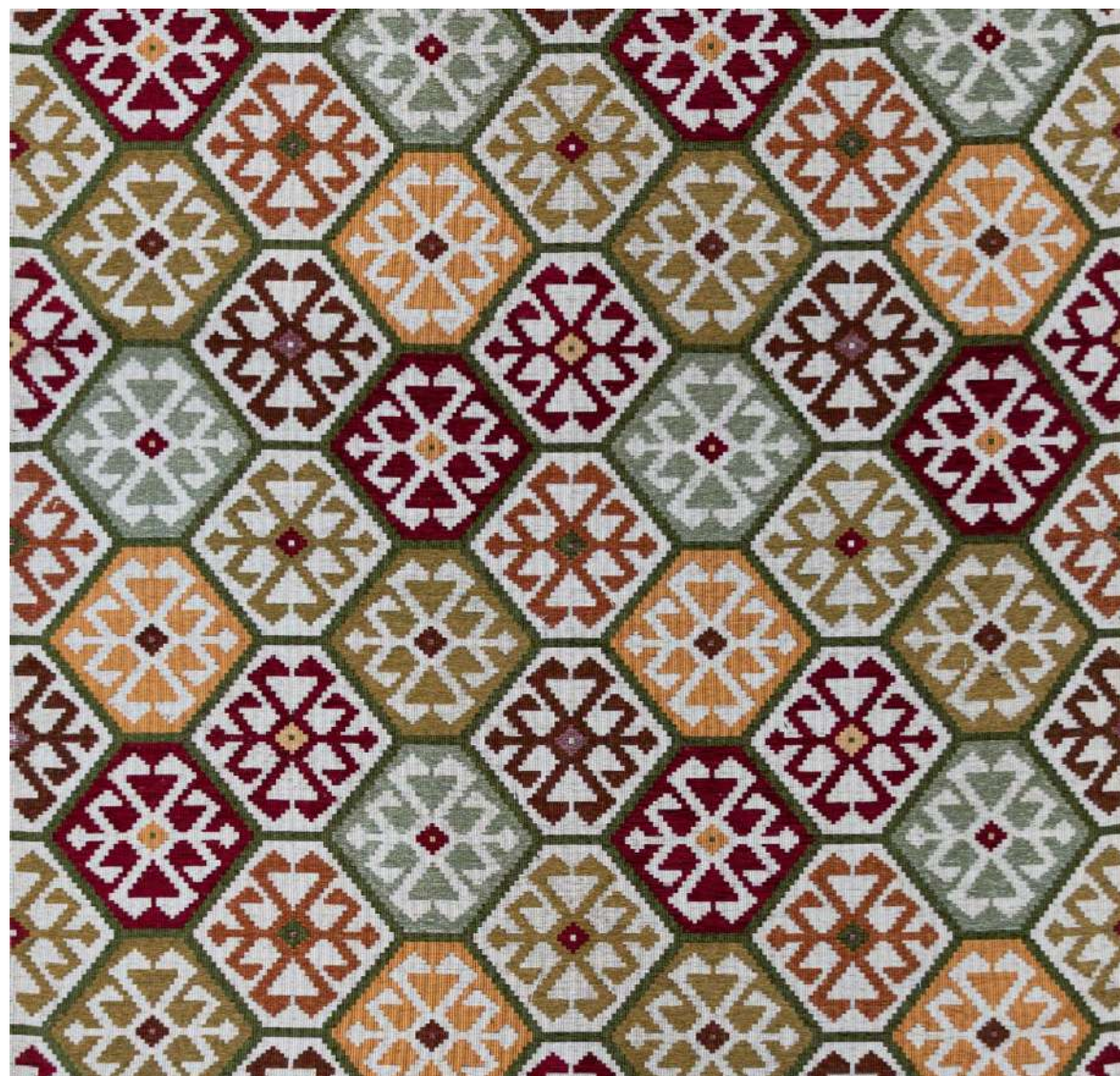
COMPOSITION: 60% COT / 40% LIN  
VERTICAL REPEAT: 179 CM - 70,52"  
HORIZONTAL REPEAT: 138 CM - 54,37"  
WIDTH: 140 CM/55"  
MARTINDALE: 25.000  
CARE CODE: 30 30 30 30



CURTAINS AND ARMCHAIR IN EDUARDA GDT-5792

## TESALÓNICA GDT-5796

CHENILLE JACQUARD INSPIRED BY KILIMS, TURKISH RUGS WITH ETHNIC AND GEOMETRIC MOTIFS. A HIGH-RESISTANCE, HIGH-PERFORMANCE FABRIC, IDEAL FOR INTERIOR UPHOLSTERY.




GDT-5796-001 TESALÓNICA ROJO/VERDE



GDT-5796-002 TESALÓNICA NATURALES



GDT-5796-003 TESALÓNICA AZUL/VERDE

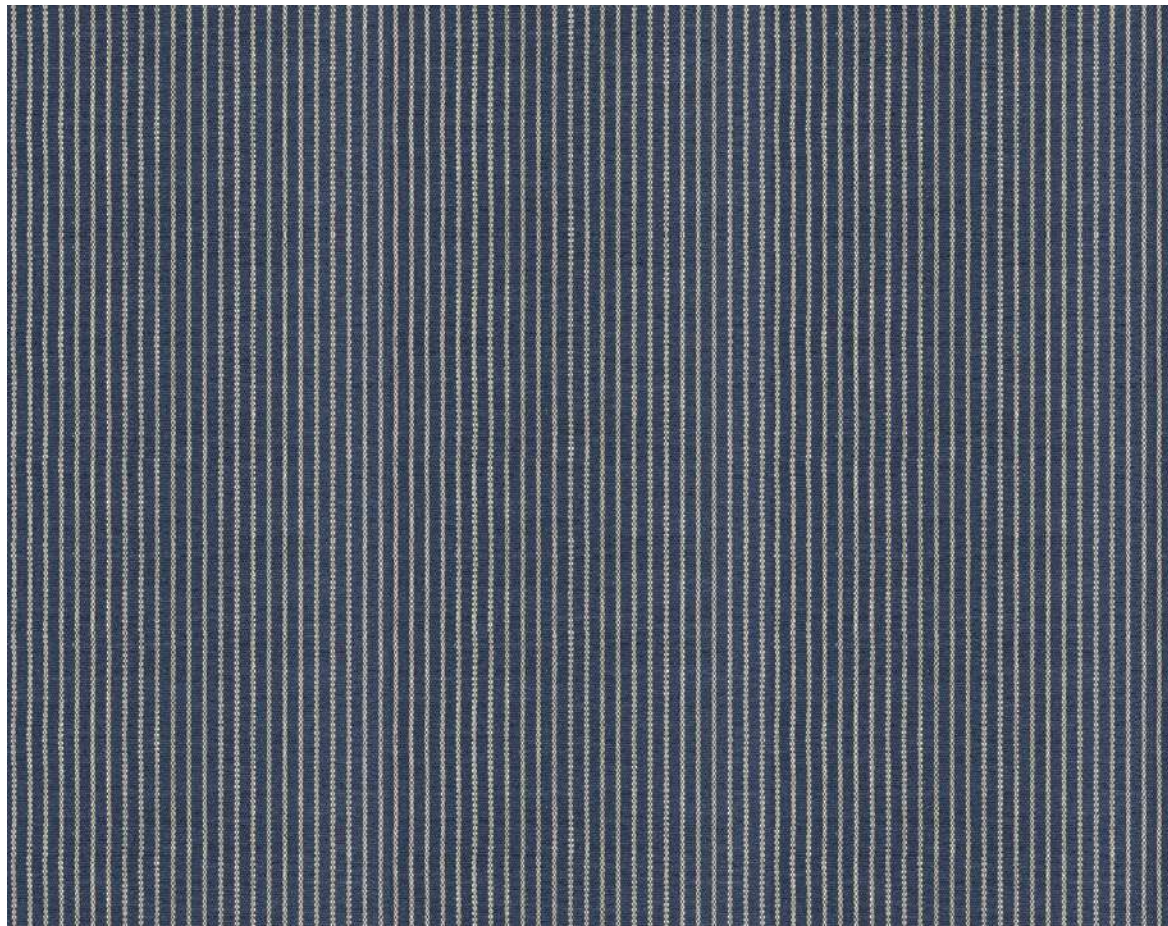
COMPOSITION: 100% PLY  
VERTICAL REPEAT: 96 CM - 37,82"  
HORIZONTAL REPEAT: 70 CM - 27,58"  
WIDTH: 140 CM/55"  
MARTINDALE: 10.000  
CARE CODE: 



ARMCHAIRS IN TESALÓNICA GDT-5796

# EGEO GDT-5791

STRIPED DESIGN WITH A TEXTURED EFFECT, AVAILABLE IN A WIDE COLOUR PALETTE.



GDT-5791-001 EGEO NAVY



GDT-5791-006 EGEO JADE



GDT-5791-007 EGEO VERDE TURQUESA



GDT-5791-008 EGEO CHOCOLATE



GDT-5791-009 EGEO VISIÓN



GDT-5791-010 EGEO TOSTADO



GDT-5791-011 EGEO CALABAZA



GDT-5791-012 EGEO MANDARINA



GDT-5791-013 EGEO AMARILLO



GDT-5791-014 EGEO CARDENAL



GDT-5791-015 EGEO CHICLE



GDT-5791-016 EGEO ROSA



GDT-5791-017 EGEO VERDE BOTELLA



GDT-5791-002 EGEO OCEANO



GDT-5791-003 EGEO AZUL BRUMA



GDT-5791-004 EGEO AZUL CIELO



GDT-5791-005 EGEO CELADÓN



GDT-5791-018 EGEO ROJO



GDT-5791-019 EGEO GRIS



GDT-5791-020 EGEO CRUDO

COMPOSITION: 83% PLY RECICLE/17% PLY

VERTICAL REPEAT: 0

HORIZONTAL REPEAT: 1,8 CM - 0,70"

WIDTH: 140 CM/55"

MARTINDALE: 30.000

CARE CODE: 



## EÓLIDA GDT-5790

VELVET WITH A TONE-ON-TONE STRIPE PATTERN CRAFTED IN AN EXTENSIVE AND METICULOUSLY COLOUR PALETTE.



GDT-5790-001 EÓLIDA NAVY



GDT-5790-002 EÓLIDA AZUL PRINCIPE

COMPOSITION: 100 % PLY  
VERTICAL REPEAT: 4,5 CM - 1,77"  
HORIZONTAL REPEAT: 0  
WIDTH: 140 CM - 55"  
MARTINDALE: 30.000  
CARE CODE:



GDT-5790-003 EÓLIDA OCÉANO



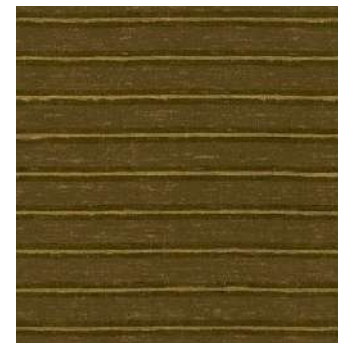
GDT-5790-004 EÓLIDA BURDEOS



GDT-5790-005 EÓLIDA ROSA



GDT-5790-006 EÓLIDA NARANJA



GDT-5790-007 EÓLIDA ACEITE



GDT-5790-008 EÓLIDA VERDE



GDT-5790-009 EÓLIDA TOSTADO



GDT-5790-0010 EÓLIDA CRUDO



## DOGA GDT-5793

PRINT INFLUENCED BY OTTOMAN FABRIC WITH AN IKAT AND ETHNIC PATTERN.  
LARGE-SCALE DESIGN IN A VIBRANT COLOUR PALETTE.



GDT-5793-001 DOGA AGUA / FRESA



GDT-5793-002 DOGA TOPO / OCRE




GDT-5793-003 DOGA AZUL / ORO



GDT-5793-004 DOGA TEJA / AZUL



GDT-5793-005 DOGA ROJO / VERDE

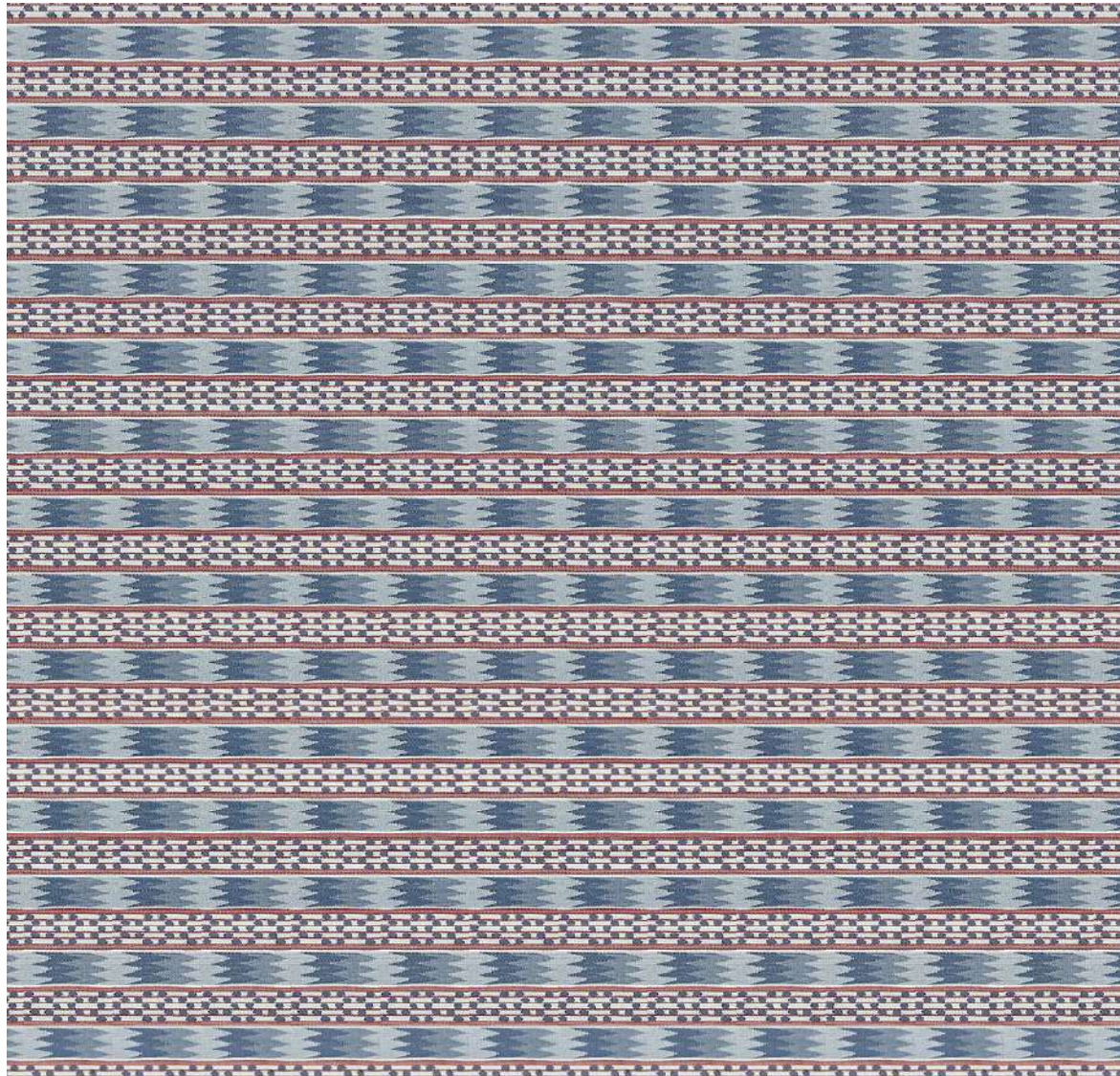
COMPOSITION: 100% COT  
VERTICAL REPEAT: 77 CM - 30,33"  
HORIZONTAL REPEAT: 68 CM - 26,79"  
WIDTH: 140 CM / 55"  
MARTINDALE: 25.000  
CARE CODE: 



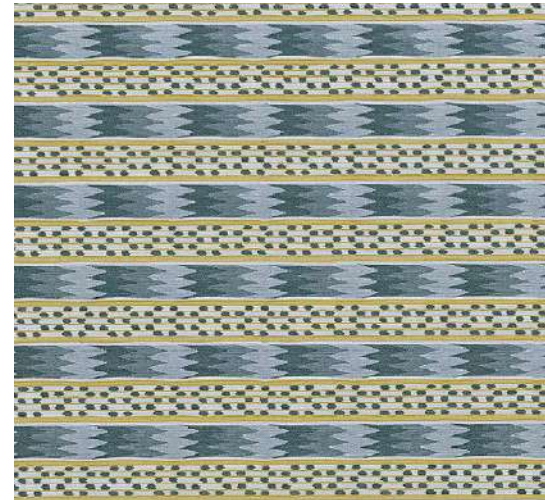
PUFF IN DOGA GDT-5793

## EFESO GDT-5788

COTTON AND LINEN FABRIC INSPIRED BY THE DESIGN OF AN OTTOMAN CAFTAN FROM THE 18TH CENTURY. ITS STRIPED PATTERN HAS BEEN DEVELOPED IN A COLOUR PALETTE WITH A DISTINCTIVE PERSONALITY, ALLOWING FOR VERSATILE USES IN VARIOUS ENVIRONMENTS.S.



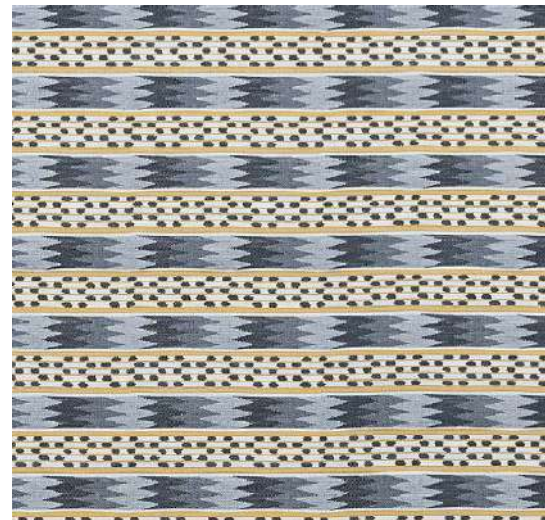
GDT-5788-001 EFESO AZUL/ROJO



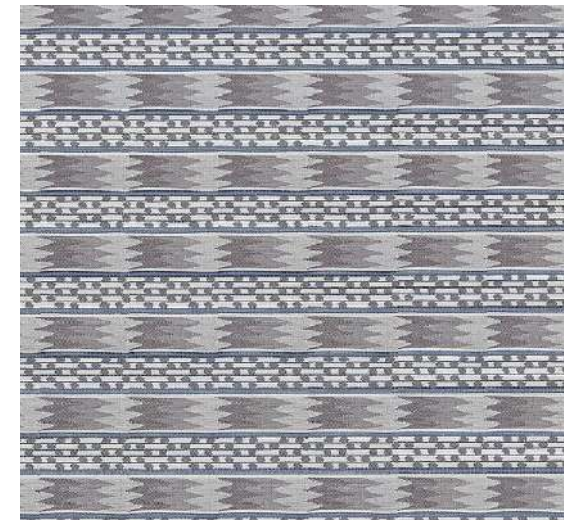
GDT-5788-002 EFESO VERDE



GDT-5788-003 EFESO AMARILLO



GDT-5788-004 EFESO NEGRO/OCRE



GDT-5788-005 EFESO MARRÓN/AZUL

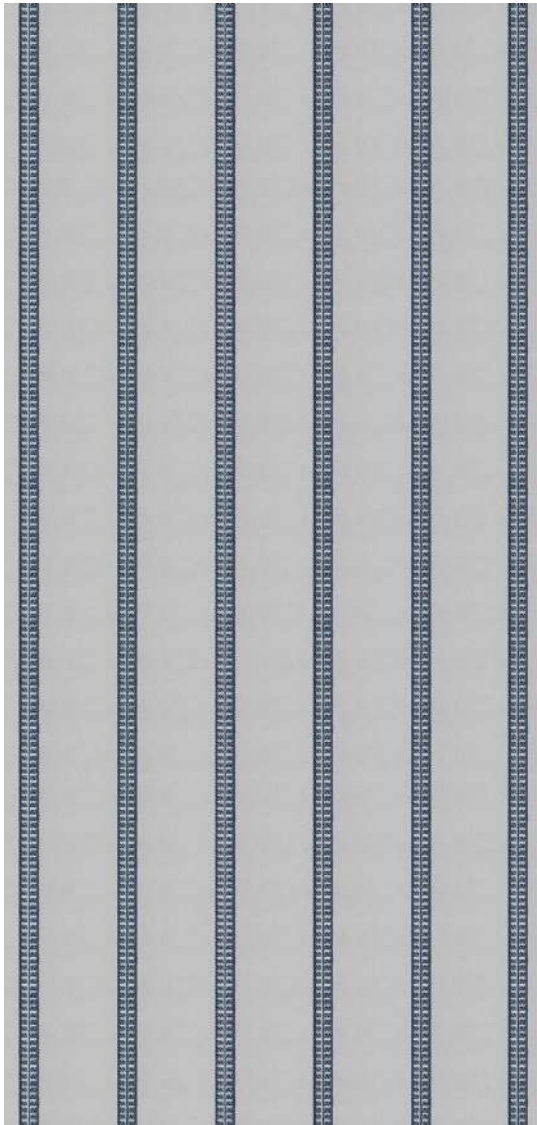
COMPOSITION: 43% VI/ 38% COT/ 19% LIN  
VERTICAL REPEAT: 10 CM - 3,94"  
HORIZONTAL REPEAT: 0  
WIDTH: 138 CM - 54"  
MARTINDALE: 30.000  
CARE CODE:



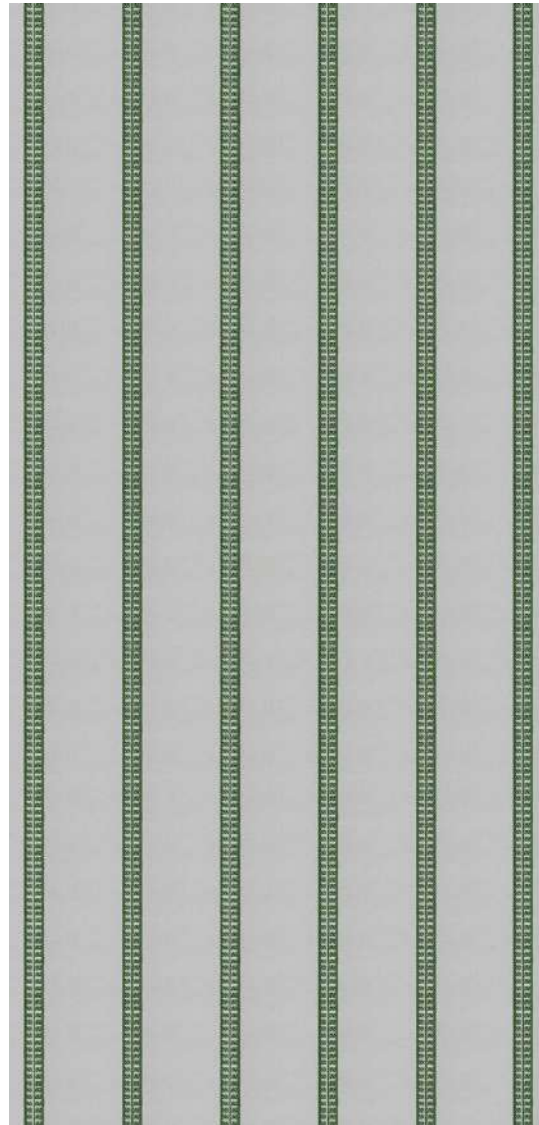
CHAIRS IN EFESO GDT-5788  
TABLECLOTH IN ESMIRNA GDT-5789

## ESMIRNA GDT-5789

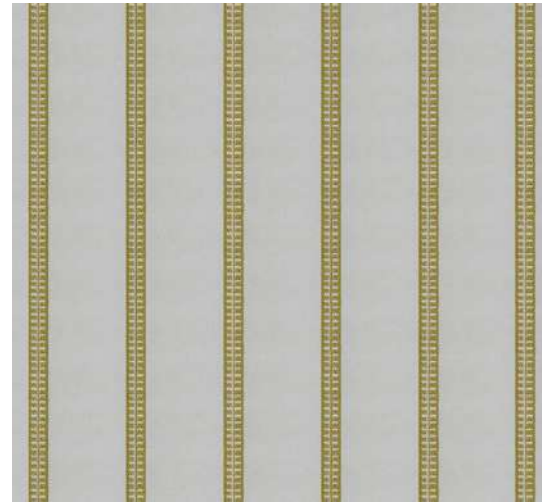
COTTON FABRIC WITH A STRIPED DESIGN, INSPIRED BY THE FRETWORK AND GEOMETRIC AESTHETICS OF CLASSICAL GREECE. THIS PATTERN, CRAFTED IN PRIMARY COLOURS, PAYS HOMAGE TO THE TIMELESS ELEGANCE OF GREEK HISTORY.



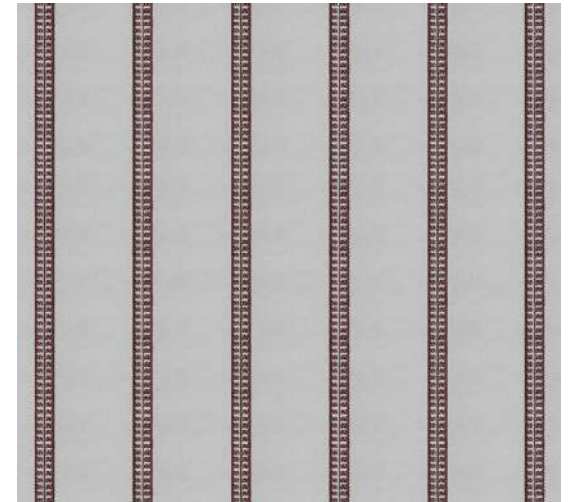
GDT-5789-001 ESMIRNA AZUL



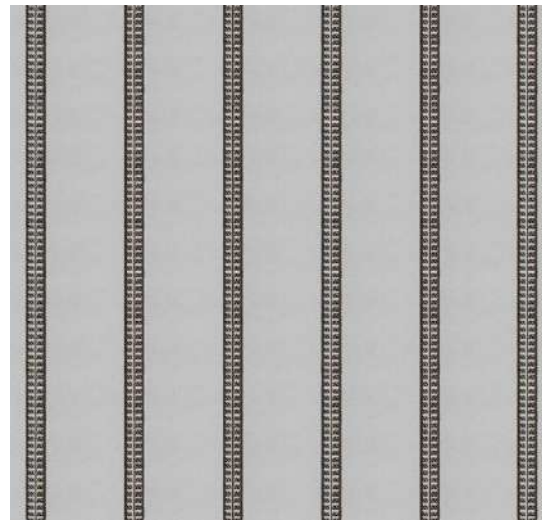
GDT-5789-002 ESMIRNA VERDE



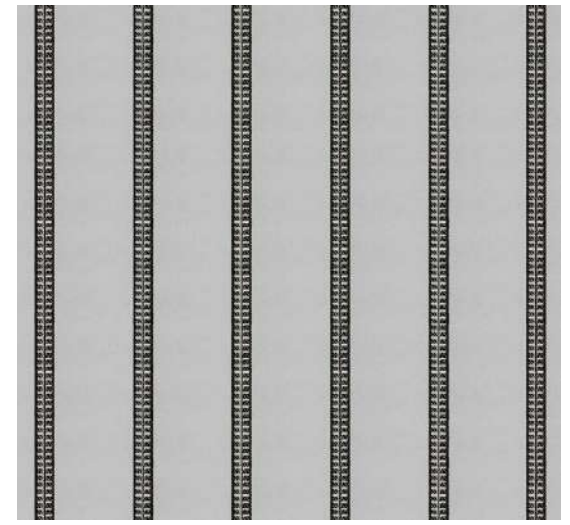
GDT-5789-003 ESMIRNA AMARILLO



GDT-5789-004 ESMIRNA BURDEOS



GDT-5789-005 ESMIRNA CHOCOLATE



GDT-5789-006 ESMIRNA NEGRO

COMPOSITION: 62% COT/ 25% PLY/ 9% VI / 4% LIN

VERTICAL REPEAT: 14 CM - 5,2"

HORIZONTAL REPEAT: 0

WIDTH: 278 CM - 109"

MARTINDALE: 30.000

CARE CODE: 

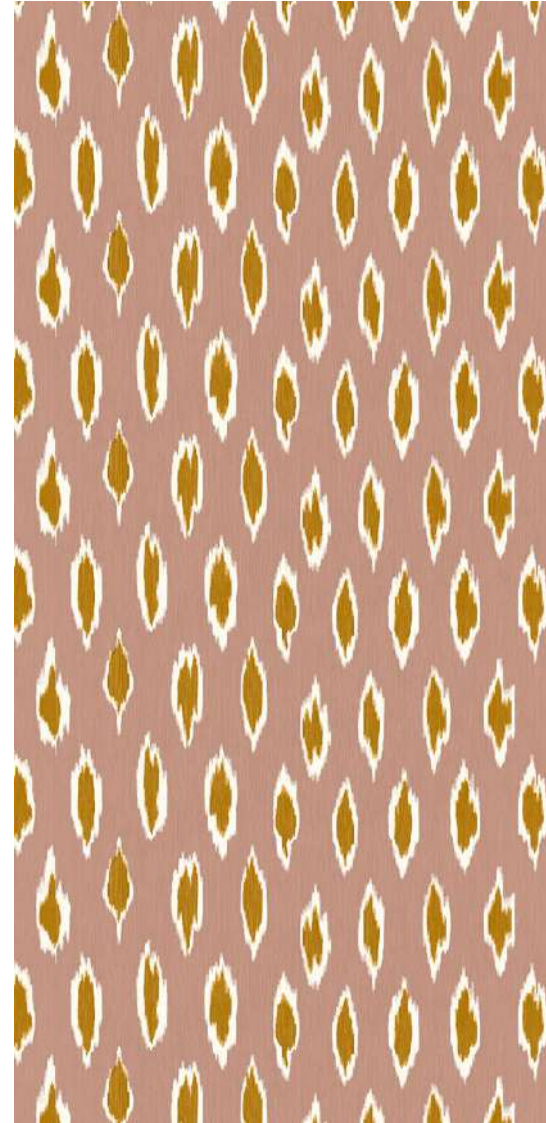
## HALI GDT-5794

---

CAPTIVATING DESIGN FEATURING ETHNIC MOTIFS AND A RICH COLOUR PALETTE THAT BRING WARMTH AND SOPHISTICATION TO ANY ENVIRONMENT..



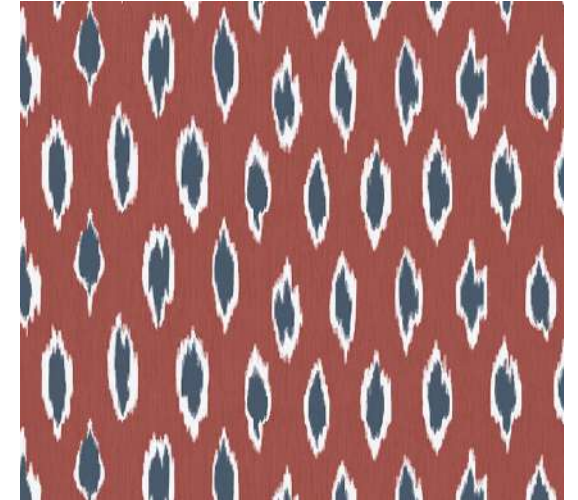
GDT-5794-001 HALI NAVY/OCRE



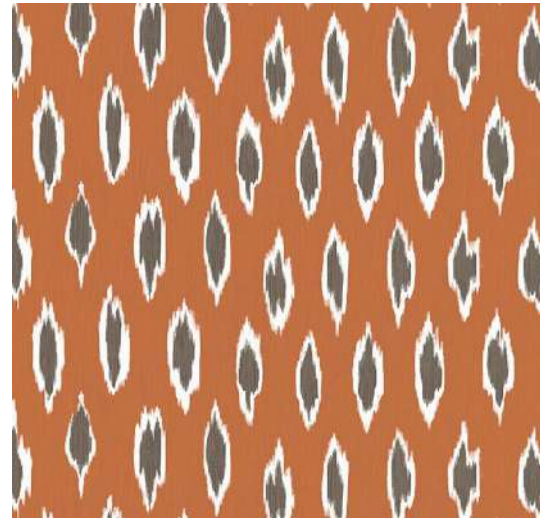
GDT-5794-002 HALI ROSA/OCRE



GDT-5794-003 HALI OCRE/AZUL



GDT-5794-004 HALI TOMATE/AZUL

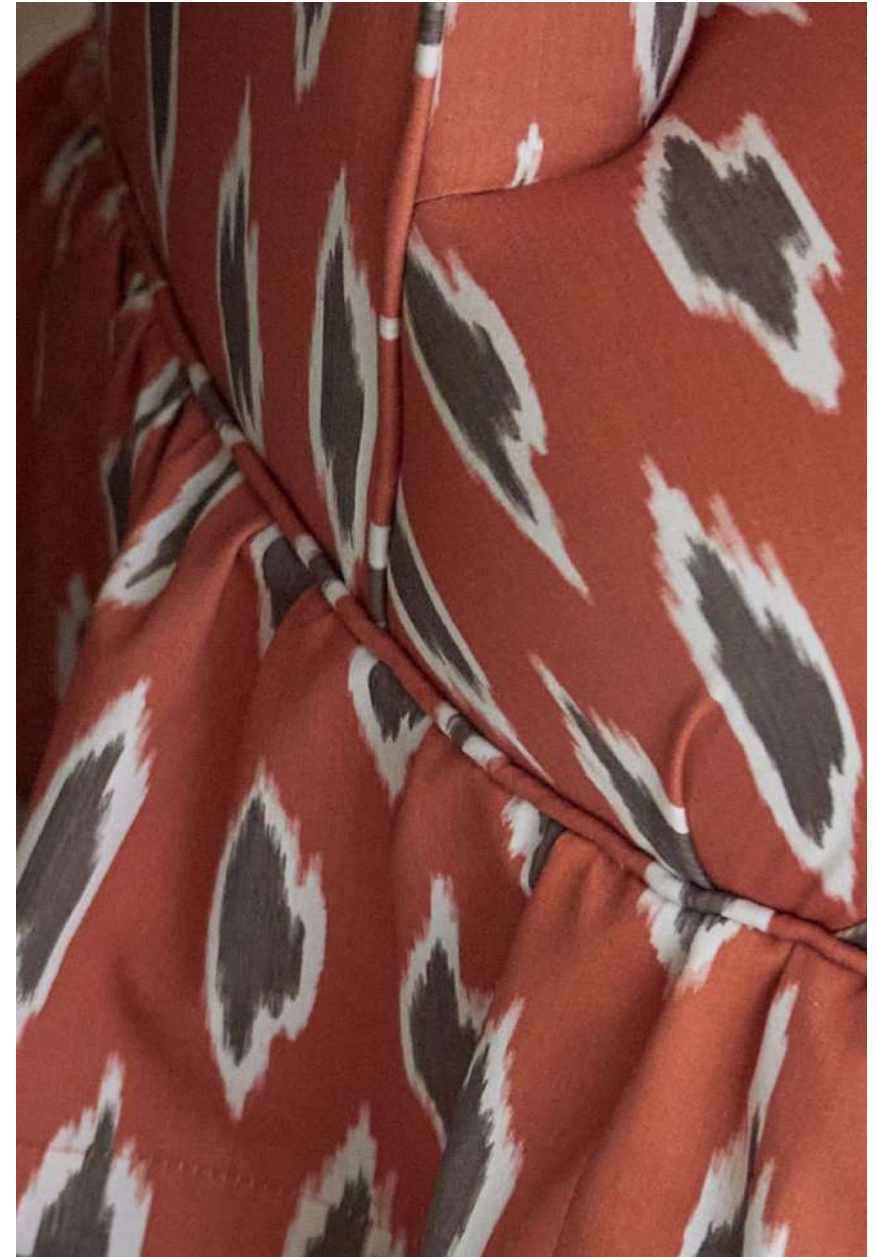


GDT-5794-005 HALI NARANJA/TOPO



GDT-5794-006 HALI VERDE

COMPOSITION: 100% COT  
VERTICAL REPEAT: 23,5 CM - 9,25"  
HORIZONTAL REPEAT: 68 CM - 26,79"  
WIDTH: 140 CM/55"  
MARTINDALE: 25.000  
CARE CODE:

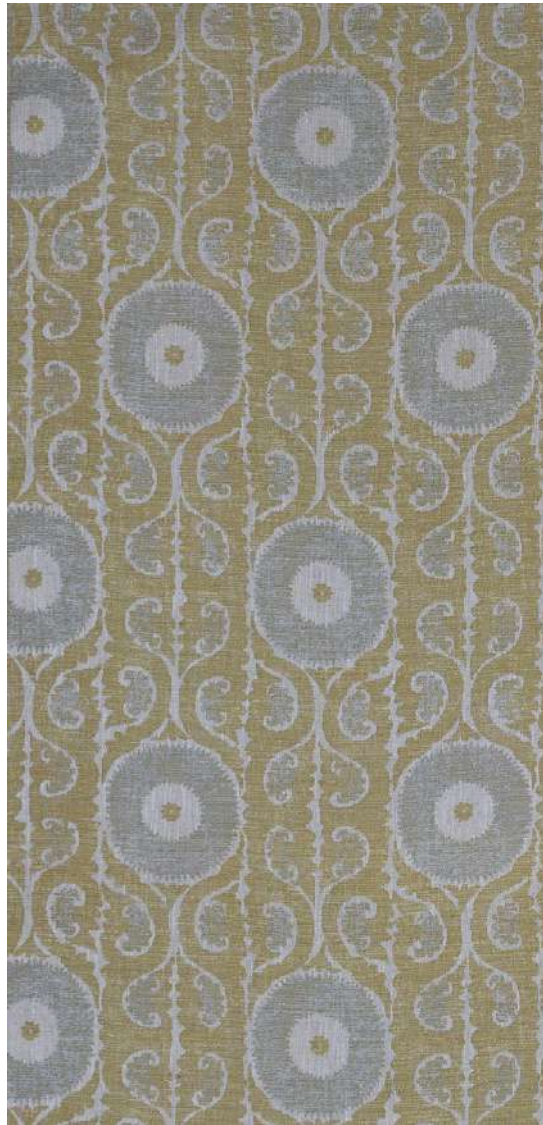


CURTAINS IN DÉDALO GDT-5797  
ARMCHAIR IN HALI GDT-5794

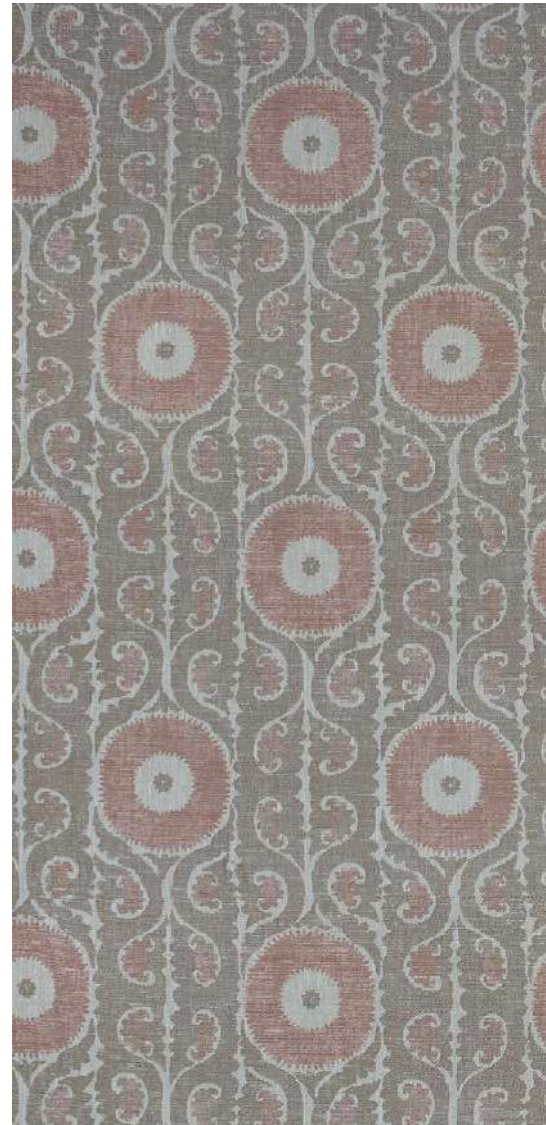
## DÉDALO GDT-5797

---

JACQUARD FABRIC INSPIRED BY A TRADITIONAL SUZANI, EVOKING THE CRAFTSMANSHIP AND CULTURAL RICHNESS OF TURKEY.



GDT-5797-001 DÉDALO ORO



GDT-5797-002 DÉDALO TOPO/ROSA



GDT-5797-003 DÉDALO VERDE




GDT-5797-004 DÉDALO AZUL



GDT-5797-005 DÉDALO CHOCOLATE



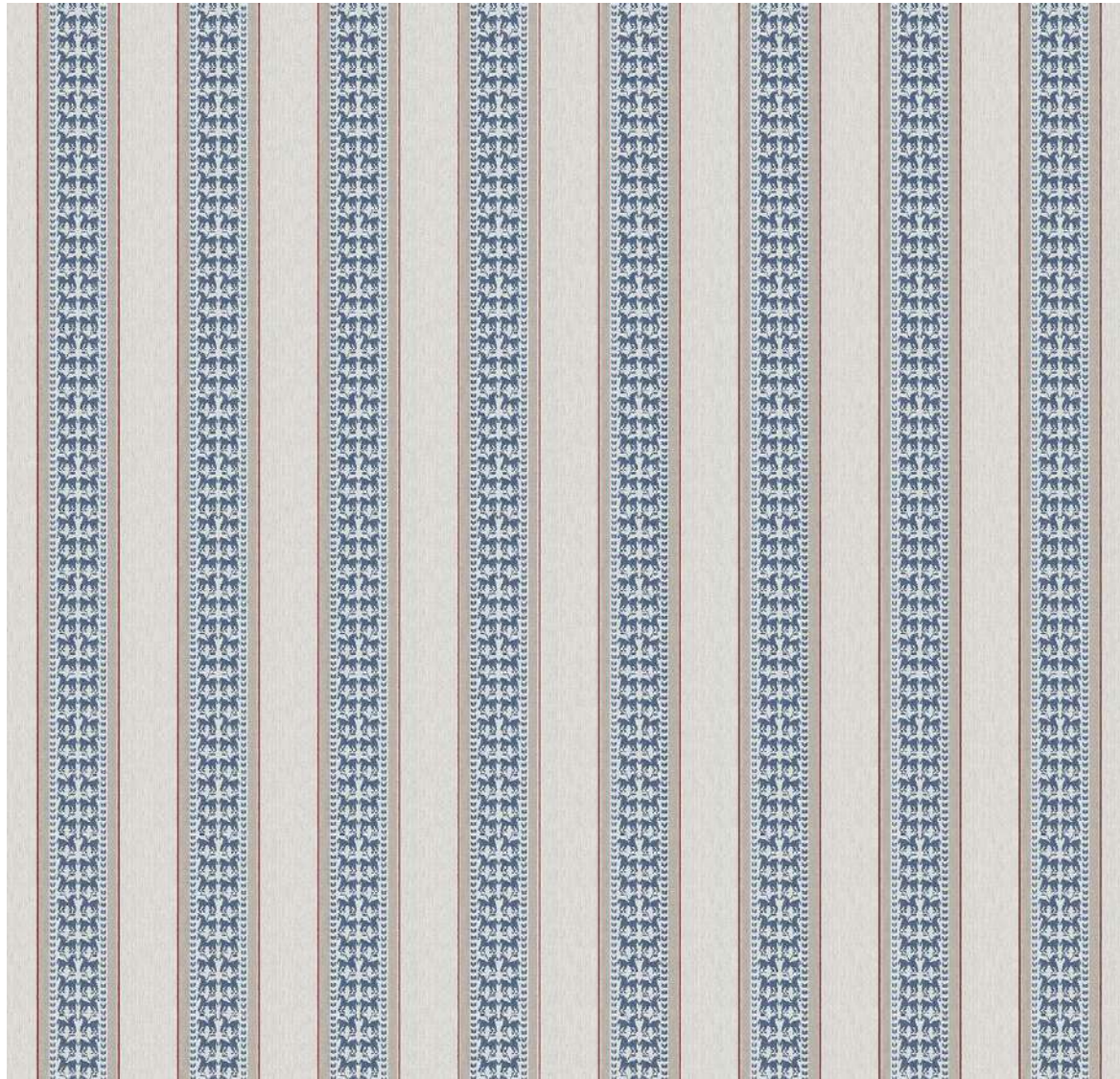
GDT-5797-006 DÉDALO TABACO

COMPOSITION: 60% VI/ 28% PLY/ 12% LIN  
VERTICAL REPEAT: 53 CM - 20,88"  
HORIZONTAL REPEAT: 36 CM - 14,18"  
WIDTH: 138 CM - 54"  
MARTINDALE: 23.000  
CARE CODE: 



## TROYA GDT-5787

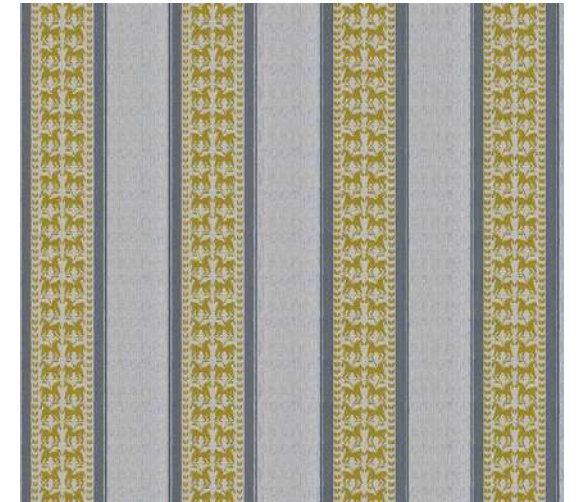
COTTON JACQUARD FABRIC IN DOUBLE WIDTH FEATURING A HORSE DESIGN INSPIRED BY A GREEK VESSEL (5TH CENTURY B.C.). THIS FABRIC BLENDS TRADITION AND MODERNITY.



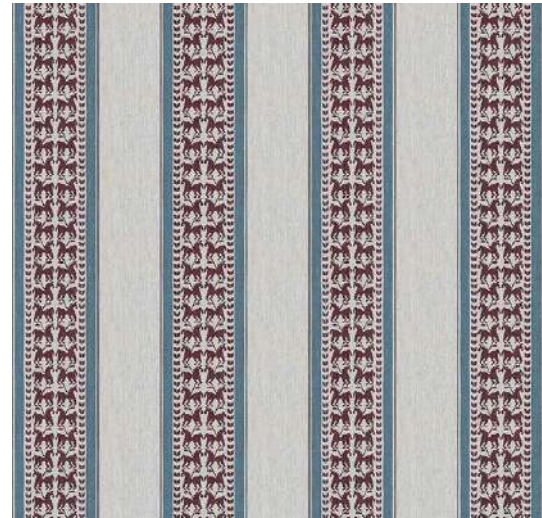
GDT-5787-001 TROYA AZUL/ROJO



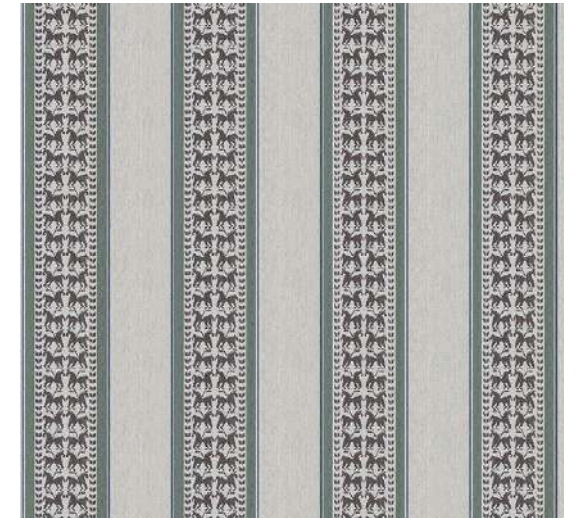
GDT-5787-002 TROYA VERDE



GDT-5787-003 TROYA AMARILLO/GRIS



GDT-5787-004 TROYA BURDEOS



GDT-5787-005 TROYA CHOCOLATE/VERDE

COMPOSITION: 43% VI/ 38% COT/ 19% LIN

VERTICAL REPEAT: 22 CM - 8,66"

HORIZONTAL REPEAT: 0

WIDTH: 278 CM - 109"

MARTINDALE: 30.000

CARE CODE: 




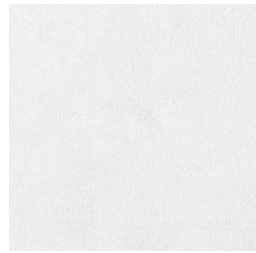
CURTAIN IN TROYA GDT-5787  
SOFA IN DOGA GDT-5793  
PUFFS IN ULISES GDT-5795



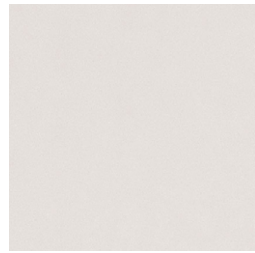
# ULISES GDT-5795

WASHABLE VELVET, WITH THE POSSIBILITY OF FLAME RETARDANCY, AVAILABLE IN A PALETTE OF 42 COLOURS INCLUDING BLUES, EARTH TONES, REDS, YELLOWS, AND GREENS.

COMPOSITION: 100% PLY  
WIDTH: 140 CM/55"  
MARTINDALE: 100.000  
CARE CODE: 



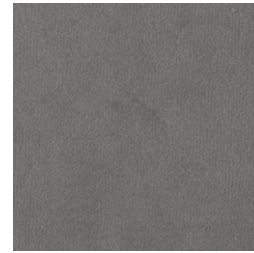
GDT-5795-001 ULISES BLANCO



GDT-5795-002 ULISES CRUDO



GDT-5795-003 ULISES BEIGE



GDT-5795-004 ULISES TOPO



GDT-5795-005 ULISES TOSTADO



GDT-5795-006 ULISES ORO



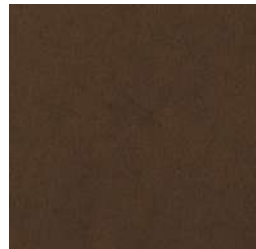
GDT-5795-007 ULISES ORO VIEJO



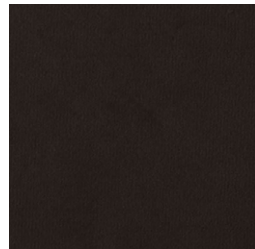
GDT-5795-008 ULISES NARANJA



GDT-5795-009 ULISES CALABAZA



GDT-5795-010 ULISES TABACO



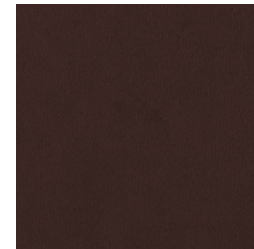
GDT-5795-011 ULISES CHOCOLATE



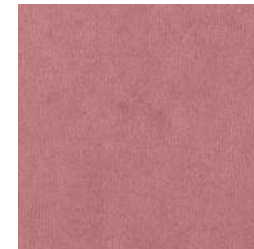
GDT-5795-012 ULISES TEJA



GDT-5795-013 ULISES ROJO



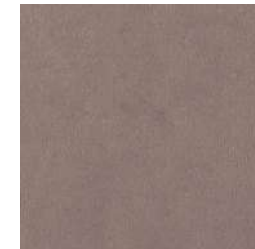
GDT-5795-014 ULISES LADRILLO



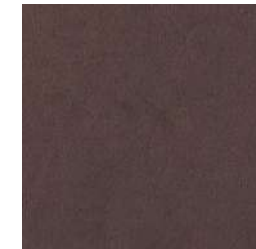
GDT-5795-015 ULISES CHICLE



GDT-5795-016 ULISES ROSA PALO



GDT-5795-017 ULISES MAQUILLAJE



GDT-5795-018 ULISES ROSA VIEJO



GDT-5795-019 ULISES BERENJENA



GDT-5795-020 ULISES CARDENAL



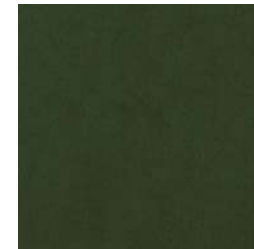
GDT-5795-021 ULISES VERDE CLARO



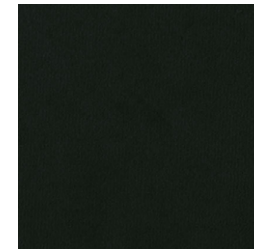
GDT-5795-022 ULISES KAKI



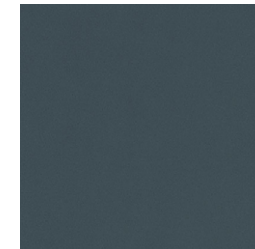
GDT-5795-023 ULISES VERDE



GDT-5795-024 ULISES VERDE BOTELLA



GDT-5795-025 ULISES VERDE CARRUAJE



GDT-5795-026 ULISES MUSGO



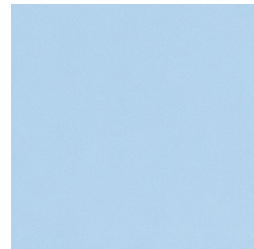
GDT-5795-027 ULISES ALGA



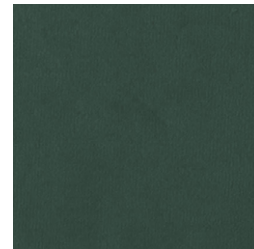
GDT-5795-028 ULISES VERDE AGUA



GDT-5795-029 ULISES ZAFIRO



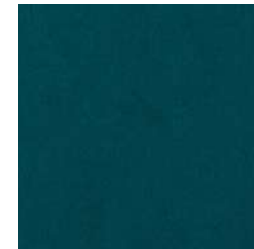
GDT-5795-030 ULISES AZUL ARTICO



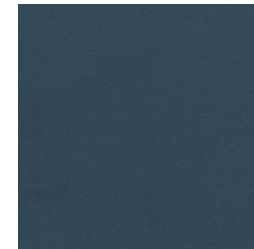
GDT-5795-031 ULISES VERDE AZULADO



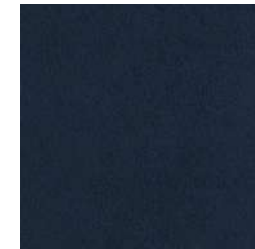
GDT-5795-032 ULISES OCEANO



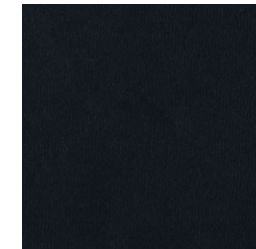
GDT-5795-033 ULISES PAVO REAL



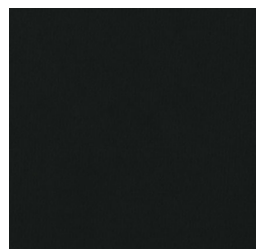
GDT-5795-034 ULISES ULTRAMAR



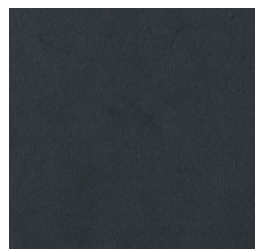
GDT-5795-035 ULISES TINTA



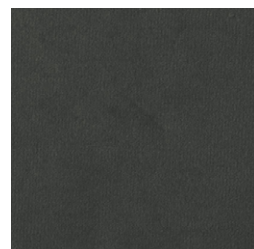
GDT-5795-036 ULISES NAVY



GDT-5795-037 ULISES NEGRO



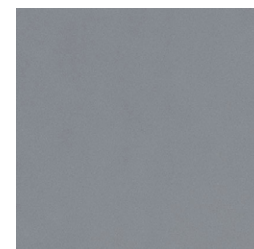
GDT-5795-038 ULISES ANTRACITA



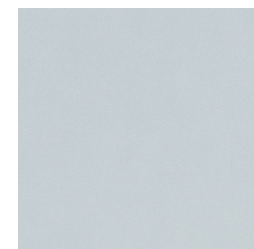
GDT-5795-039 ULISES HUMO



GDT-5795-040 ULISES GRIS



GDT-5795-041 ULISES GRIS VISÓN



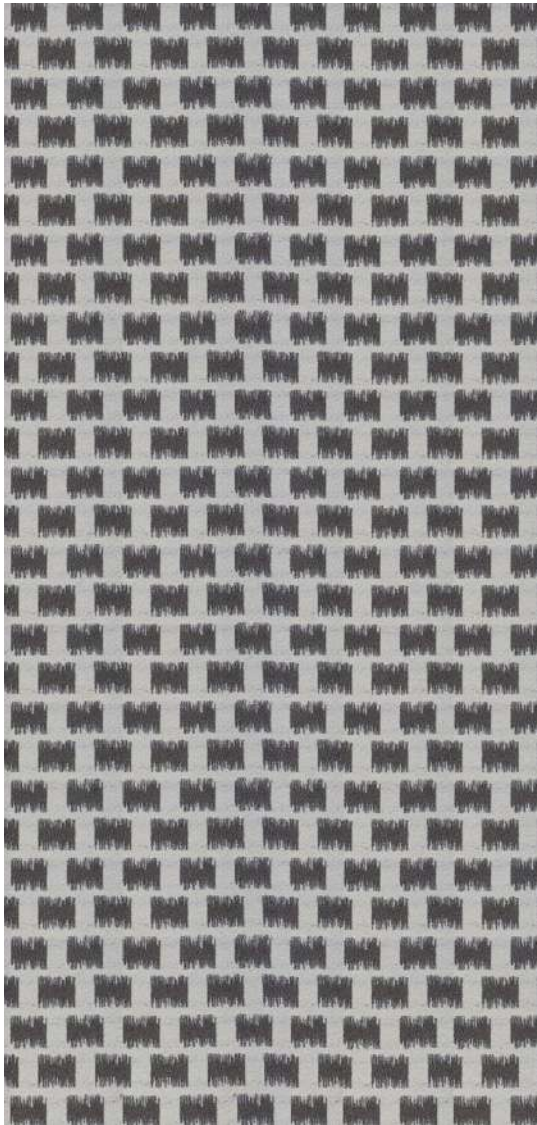
GDT-5795-042 ULISES PERLA



PUFFS IN ULISES GDT-5795

## ANTALYA GDT-5783

OUTDOOR/INDOOR FABRIC WITH INTERTWINED GEOMETRIC PATTERNS THAT STANDS OUT FOR ITS CONTEMPORARY AND VERSATILE DESIGN, ALLOWING FOR EASY INTEGRATION INTO A VARIETY OF DESIGNS AND ENVIRONMENTS.



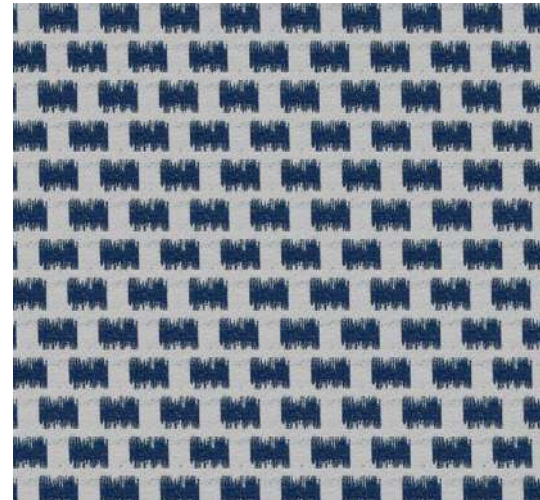
GDT-5783-001 ANTALYA TOPO



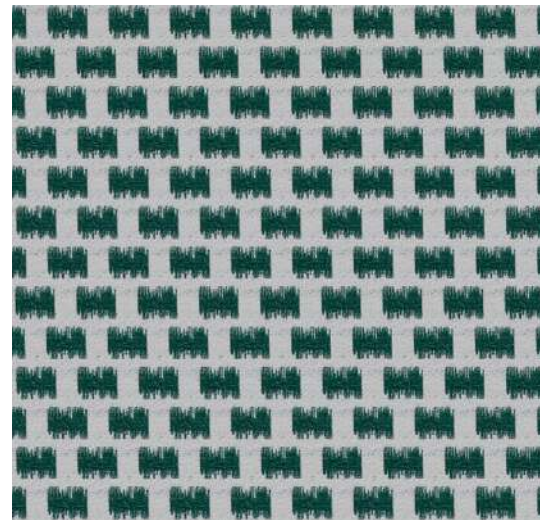
GDT-5783-002 ANTALYA BEIGE



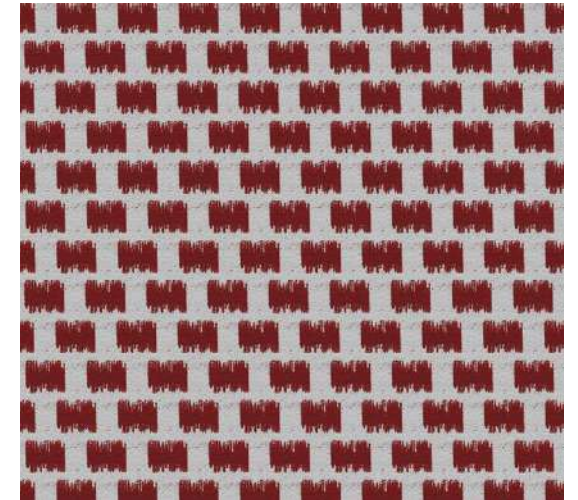
GDT-5783-003 ANTALYA OCRE



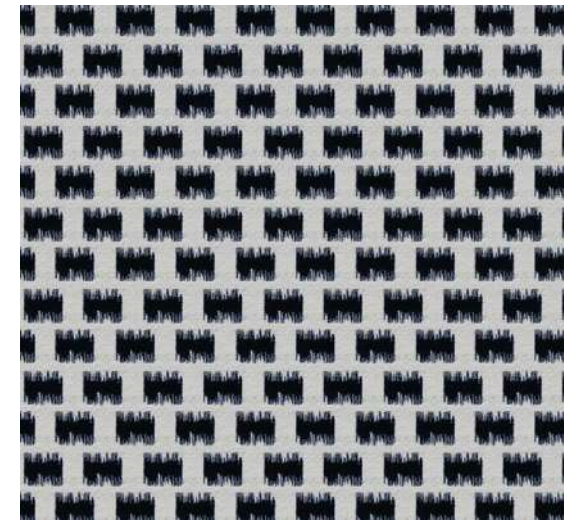
GDT-5783-005 ANTALYA AZUL




GDT-5783-004 ANTALYA VERDE



GDT-5783-006 ANTALYA ROJO



GDT-5783-007 ANTALYA NEGRO

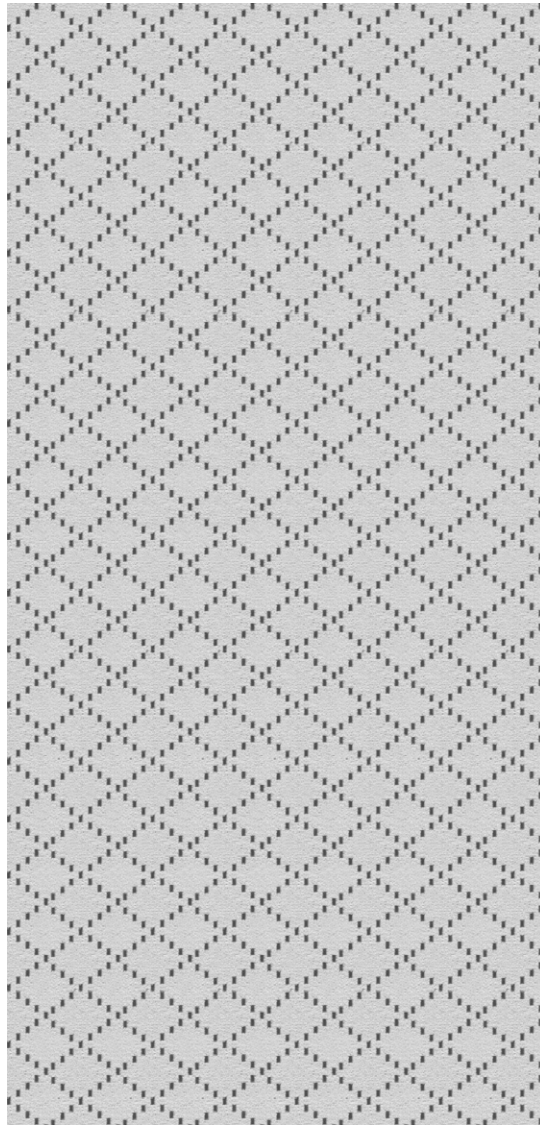
COMPOSITION: 100% PP  
VERTICAL REPEAT: 9,5 CM - 3,74"  
HORIZONTAL REPEAT: 7 CM - 2,75"  
WIDTH: 138 CM/54"  
MARTINDALE: 50.000  
CARE CODE: 



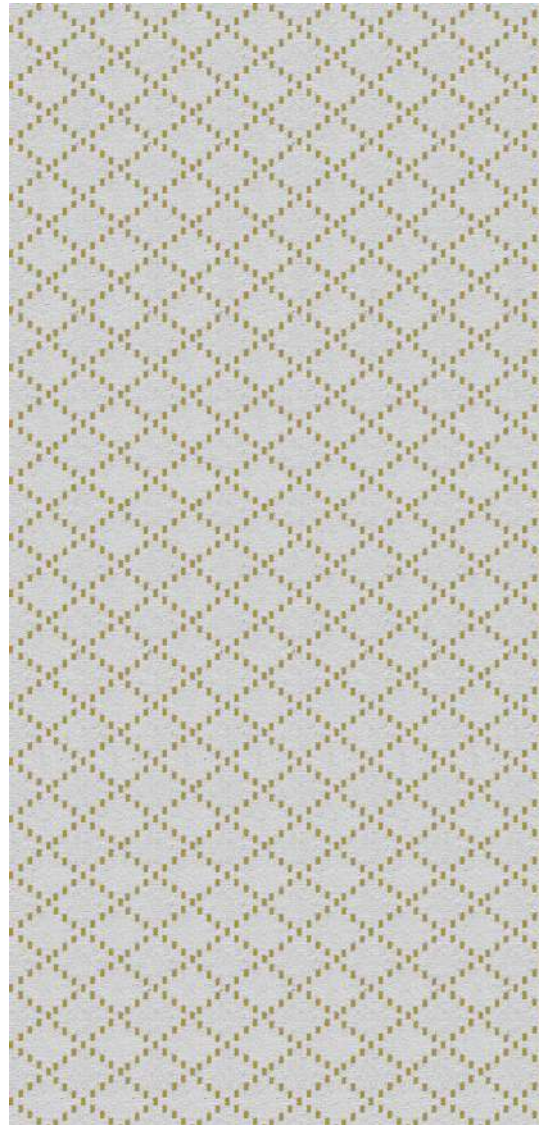
CUSHIONS IN ETRIA GDT-5784 AND PAMUK GDT-5785  
MAT IN ANTALYA GDT-5783

## ETRIA GDT-5784

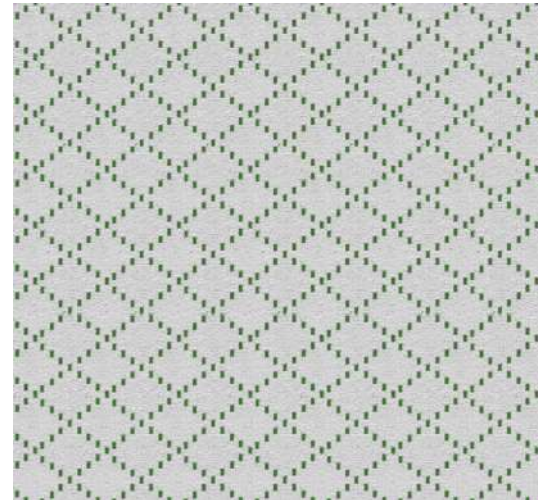
FABRIC MADE OF 100% POLYPROPYLENE SUITABLE FOR BOTH OUTDOOR AND INDOOR ENVIRONMENTS. ITS WELL-DEFINED GEOMETRIC PATTERNS MAKE IT PERFECT FOR THOSE SEEKING A TOUCH OF SOPHISTICATION IN THEIR DÉCOR.



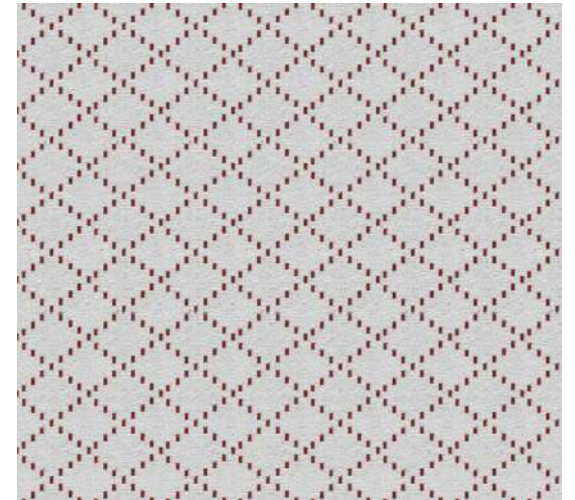
GDT-5784-001 ETRIA GRIS



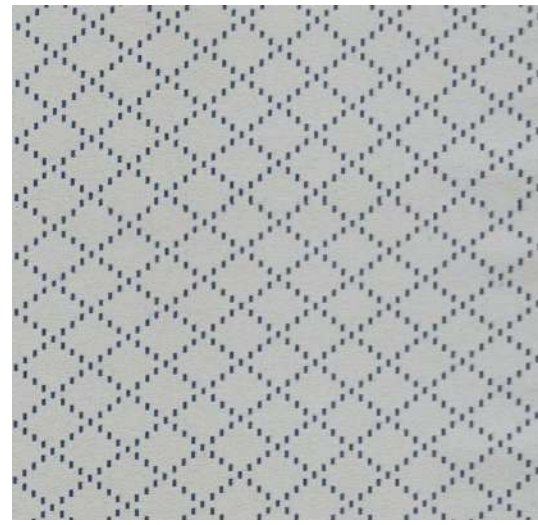
GDT-5784-002 ETRIA OCRE



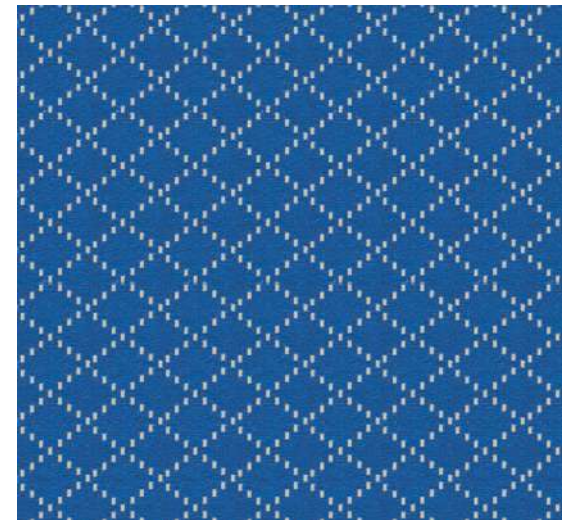
GDT-5784-003 ETRIA VERDE




GDT-5784-004 ETRIA ROJO



GDT-5784-005 ETRIA FONDO BLANCO/AZUL



GDT-5784-006 ETRIA FONDO AZUL/BLANCO

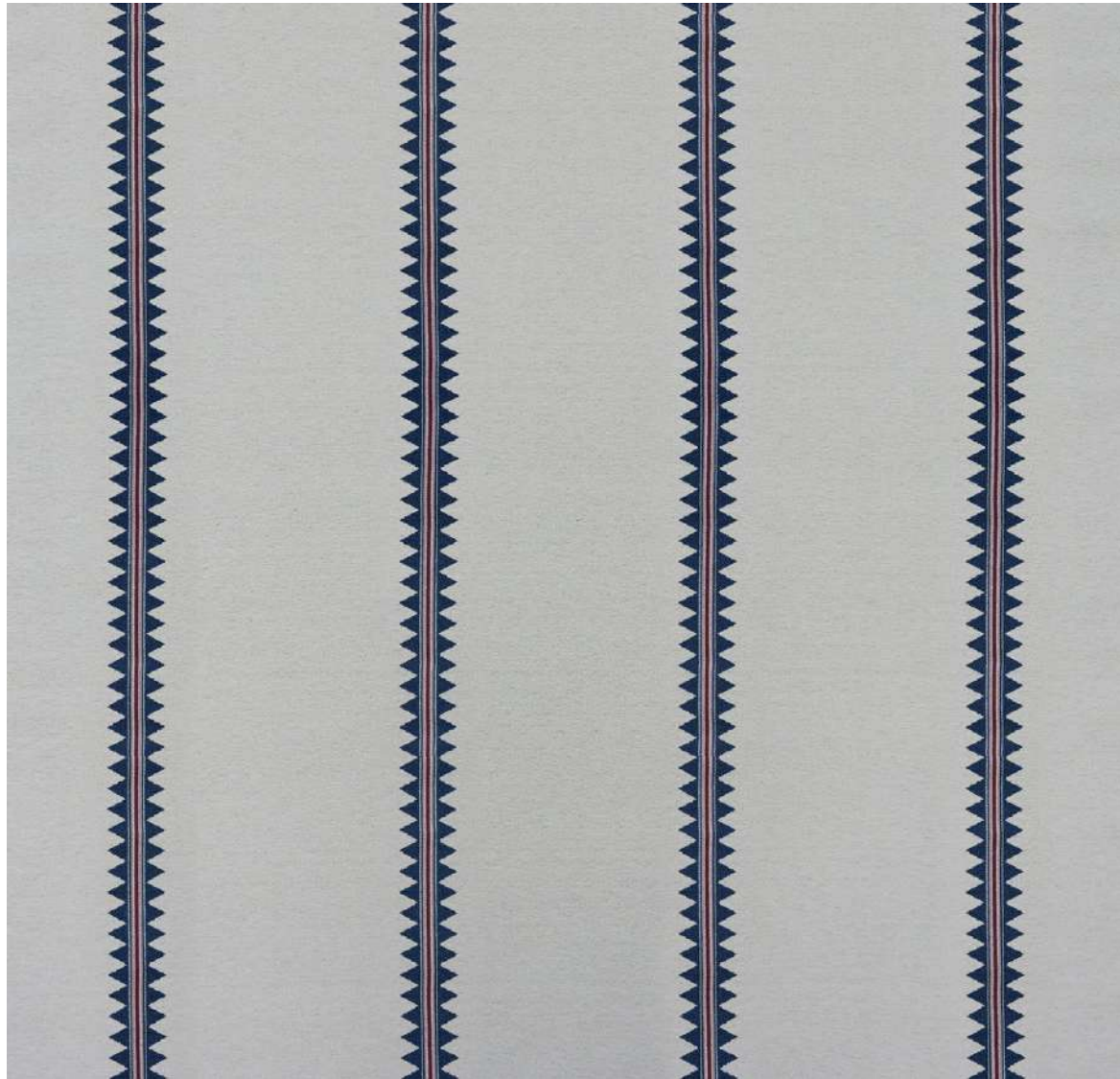
COMPOSITION: 100% PP  
VERTICAL REPEAT: 7 CM - 2,75"  
HORIZONTAL REPEAT: 9 CM - 3,54"  
WIDTH: 138 CM/54"  
MARTINDALE: 50.000  
CARE CODE: 



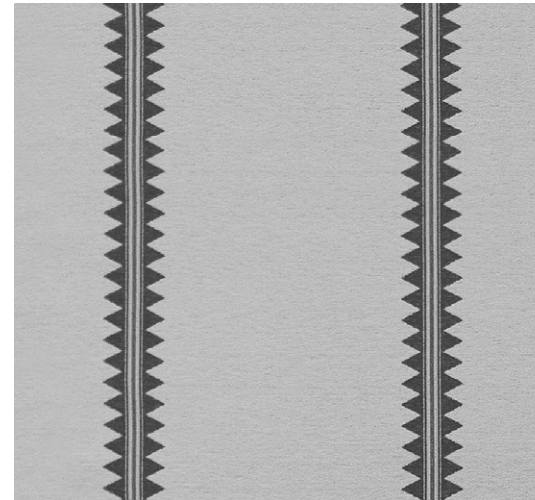
CUSHIONS IN ETRIA GDT-5784 AND PAMUK GDT-5785

## PAMUK GDT-5785

STRIPE DESIGN FEATURING AN ETHNIC PATTERN IN A PALETTE OF PRIMARY COLOURS, VERSATILE FOR BOTH OUTDOOR AND INDOOR ENVIRONMENTS. JACQUARD-WOVEN WITH POLYPROPYLENE YARN, IT BOASTS HIGH-PERFORMANCE CHARACTERISTICS.



GDT-5785-001 PAMUK AZUL



GDT-5785-002 PAMUK NEGRO




GDT-5785-003 PAMUK OCRE



GDT-5785-004 PAMUK MARRÓN

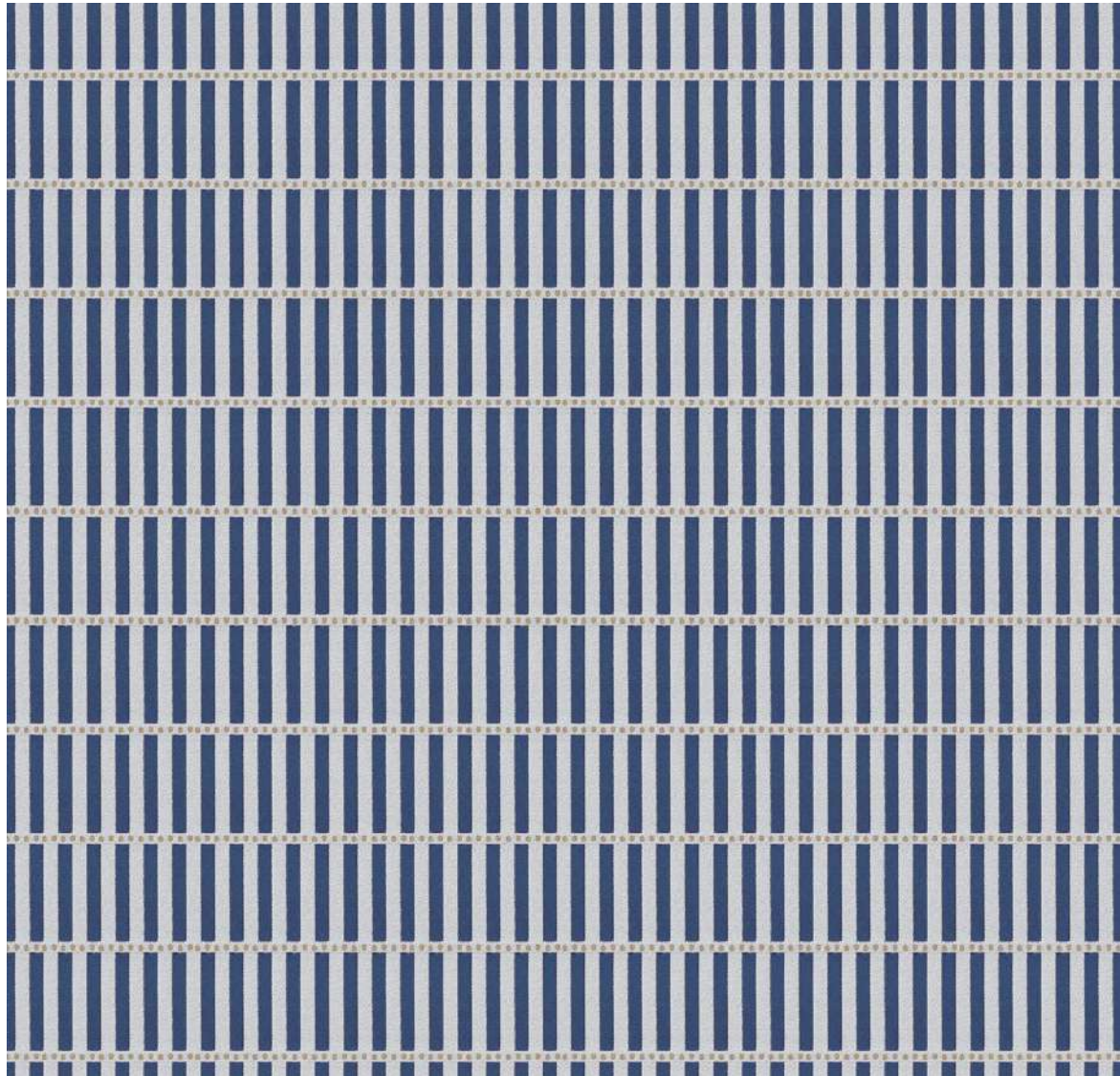


GDT-5785-005 PAMUK VERDE

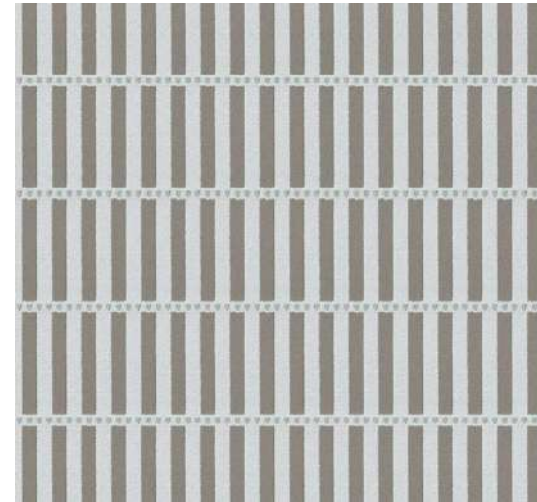
COMPOSITION: 100% PP  
VERTICAL REPEAT: 2,5 CM - 0,98"  
HORIZONTAL REPEAT: 35 CM - 13,79"  
WIDTH: 138 CM/54"  
MARTINDALE: 40.000  
CARE CODE: 

## BOSFORO GDT-5782

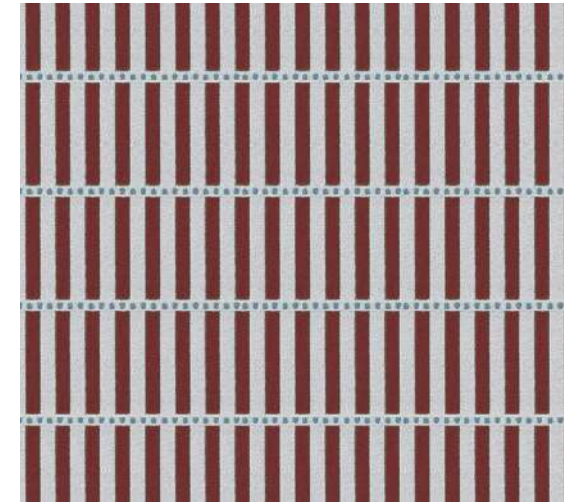
THIS INDOOR/OUTDOOR FABRIC TRANSFORMS THE CLASSIC STRIPE DESIGN INTO A WARMER AND MORE SOPHISTICATED PATTERN. A DECLARATION OF TIMELESS STYLE, PERFECT FOR DECORATION PROJECTS AIMING TO MERGE THE CLASSIC WITH THE CONTEMPORARY.



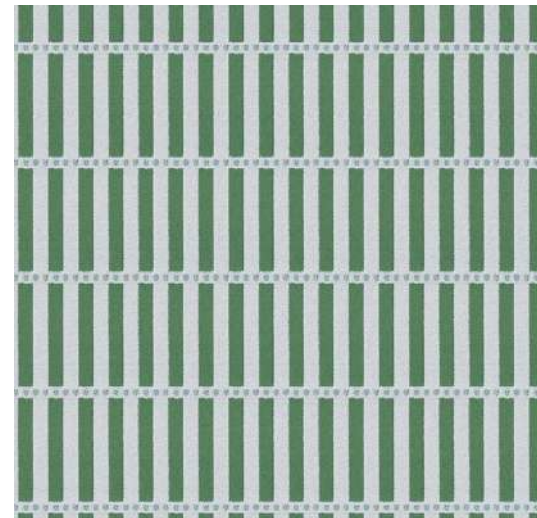
GDT-5782-002 BOSFORO AZUL



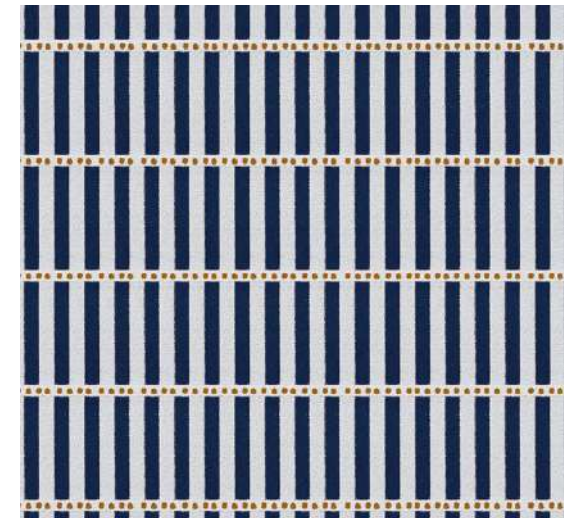
GDT-5782-001 BOSFORO BEIGE



GDT-5782-003 BOSFORO ROJO



GDT-5782-004 BOSFORO VERDE



GDT-5782-005 BOSFORO NEGRO

COMPOSITION: 100% PP

VERTICAL REPEAT: 14 CM - 5,51"

HORIZONTAL REPEAT: 3 CM - 1,18"

WIDTH: 138 CM/54"

MARTINDALE: 50.000

CARE CODE: 

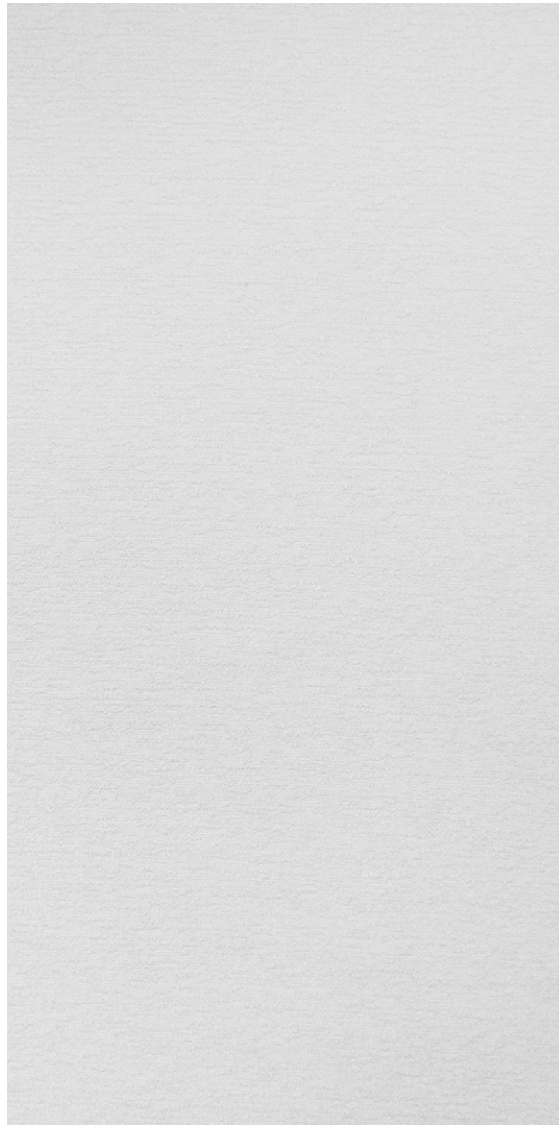


CUSHION IN BOSFORO GDT-5782

## MURAT GDT-5786

---

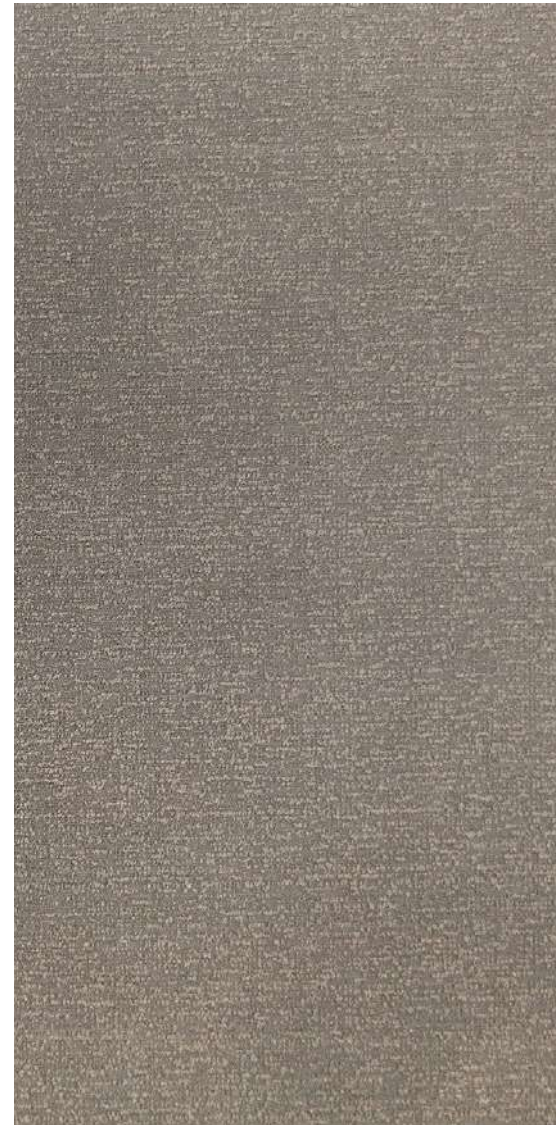
PLAIN-WEAVE FABRIC THAT PROVIDES FUNCTIONAL VERSATILITY WITHOUT SACRIFICING STYLE, MAKING IT AN IDEAL CHOICE FOR THOSE SEEKING REFINED AESTHETICS. IT ENHANCES SOBRIETY IN DECOR FOR BOTH OUTDOOR AND INDOOR ENVIRONMENTS.



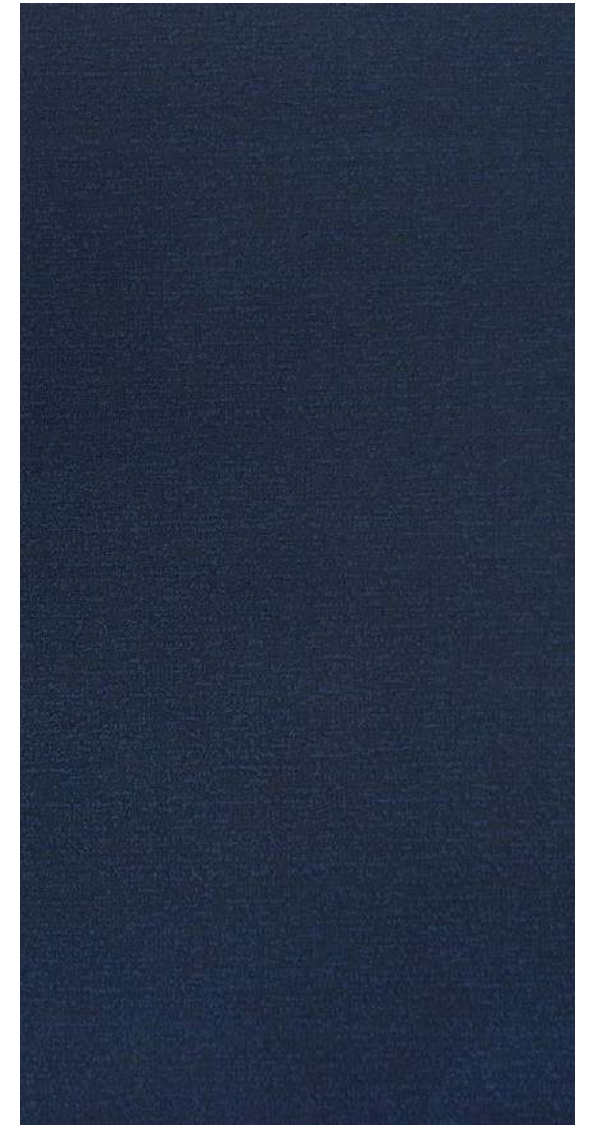
GDT-5786-001 MURAT BLANCO



GDT-5786-002 MURAT CRUDO



GDT-5786-003 MURAT TOPO



GDT-5786-004 MURAT NAVY

COMPOSITION: 73% PP / 27% PLY

VERTICAL REPEAT: 0

HORIZONTAL REPEAT: 0

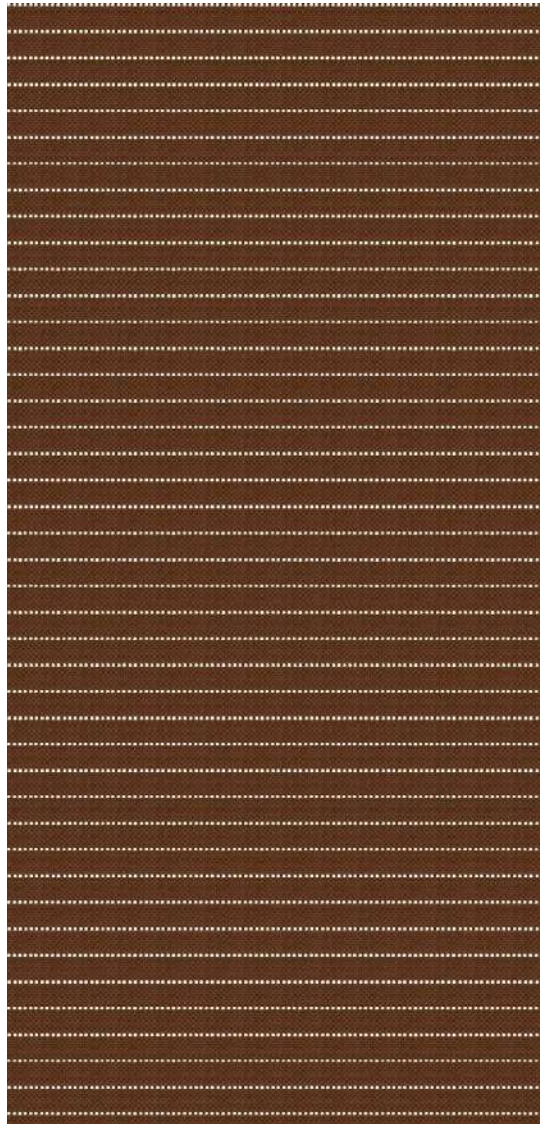
WIDTH: 138 CM/54"

MARTINDALE: 40.000

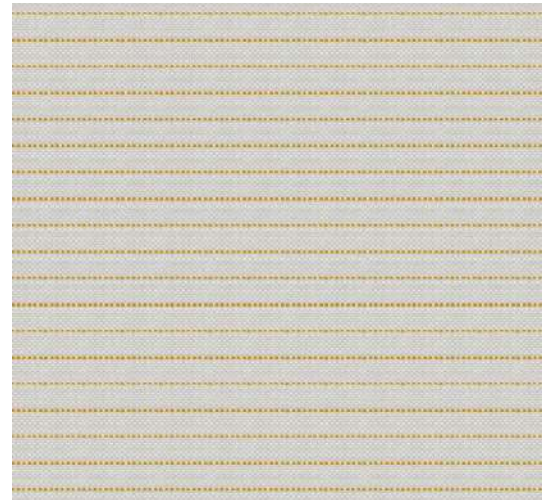
CARE CODE: 

## SAHIL GDT-5777

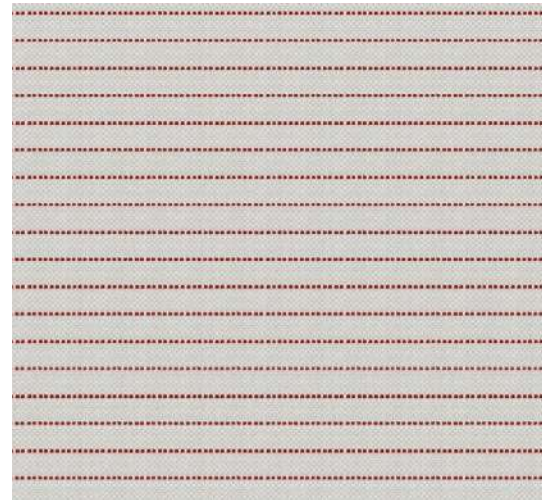
CLASSIC STRIPE PATTERN IN A WIDE RANGE OF MONOCHROMATIC COLOURS. FABRICS FOR BOTH OUTDOOR AND INDOOR USE, DISTINGUISHED BY THEIR TEXTURE AND HIGH DURABILITY.



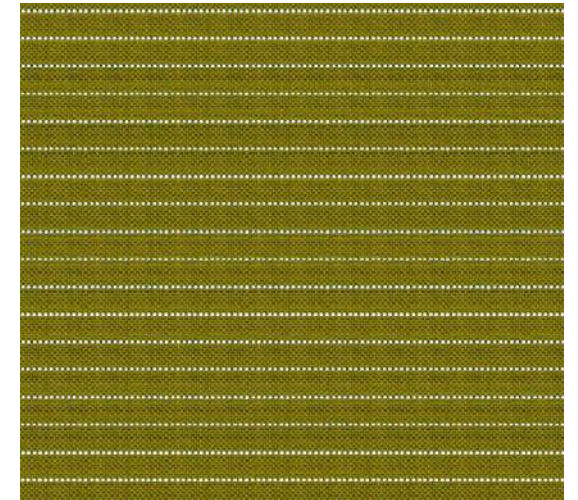
GDT-5777-001 SAHIL COBRE



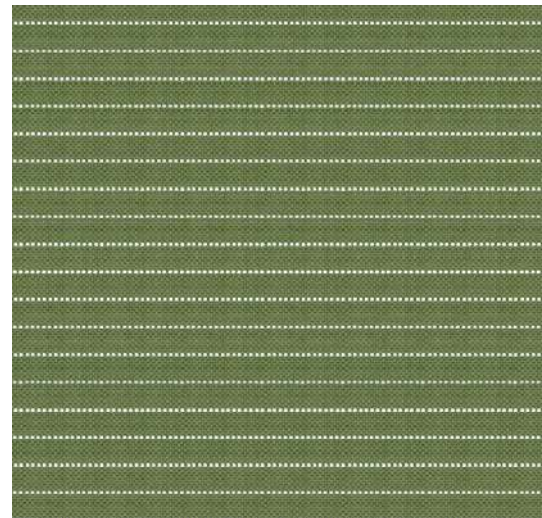
GDT-5777-002 SAHIL AMARILLO



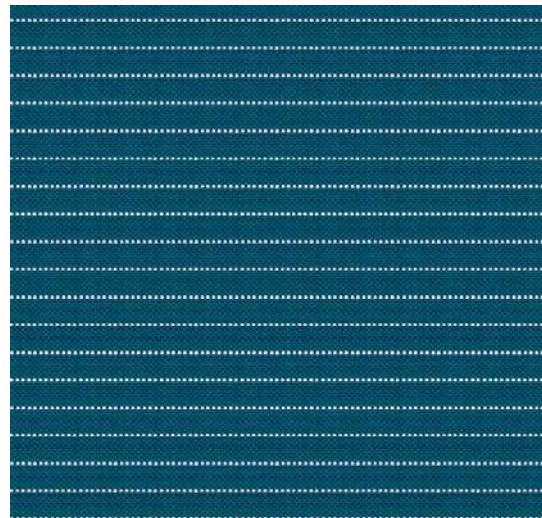
GDT-5777-003 SAHIL ROJO



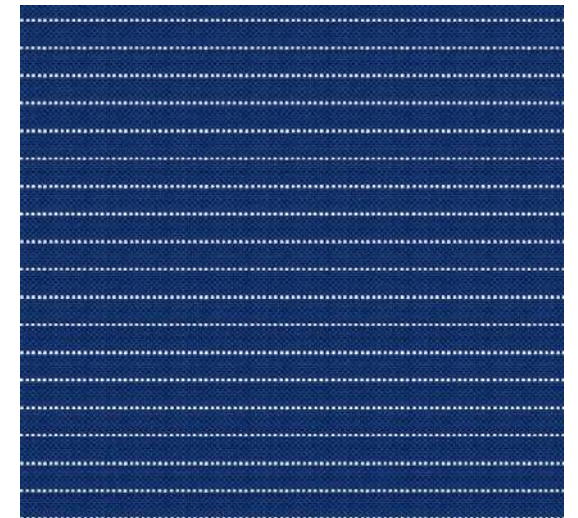
GDT-5777-004 SAHIL LIMA



GDT-5777-005 SAHIL VERDE OLIVA



GDT-5777-006 SAHIL ULTRAMAR



GDT-5777-007 SAHIL NAVY

COMPOSITION: 100% PP  
VERTICAL REPEAT: 3,4 CM -1,34"  
HORIZONTAL REPEAT: 0,7 CM - 0,27"  
WIDTH: 140 CM/55"  
MARTINDALE: 40.000  
CARE CODE:

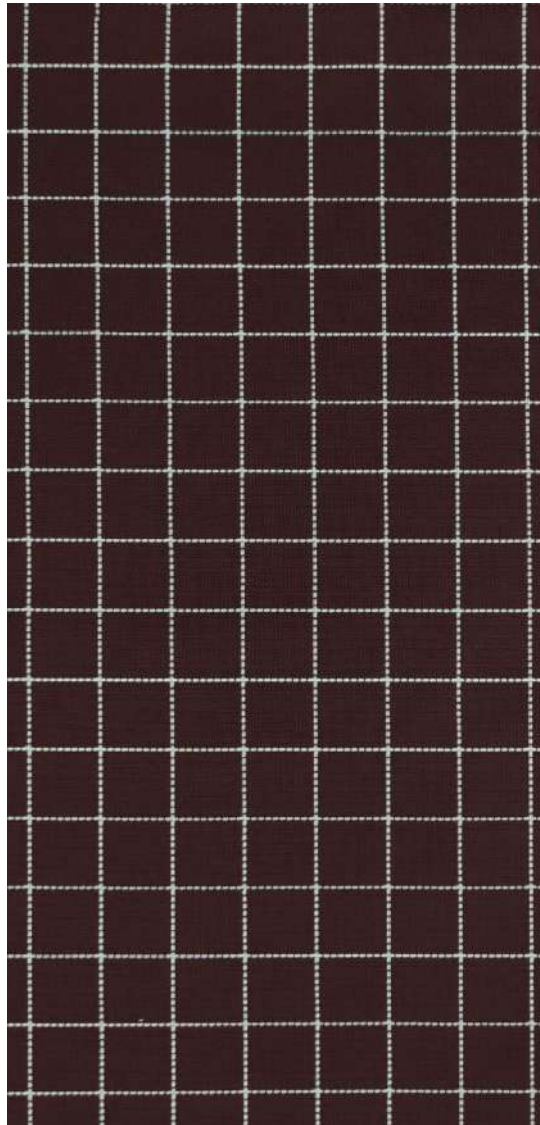


CUSHIONS IN TATIL GDT-5776  
MAT IN SAHIL GDT-5777

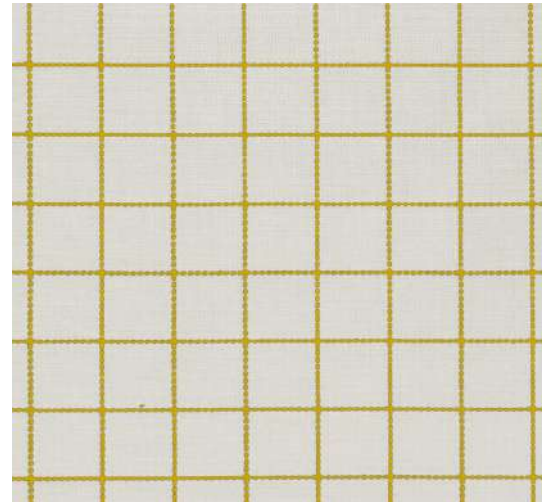
## TATIL GDT-5776

---

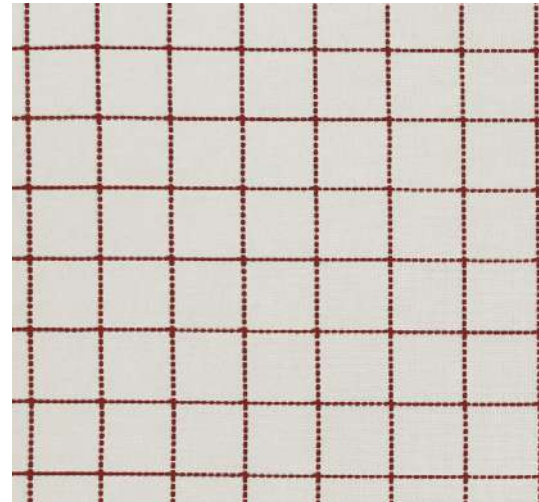
CLASSIC CHECKERED PATTERN IN A WIDE RANGE OF MONOCHROMATIC COLOURS. INDOOR AND OUTDOOR FABRICS DISTINGUISHED BY THEIR TEXTURE AND HIGH DURABILITY.



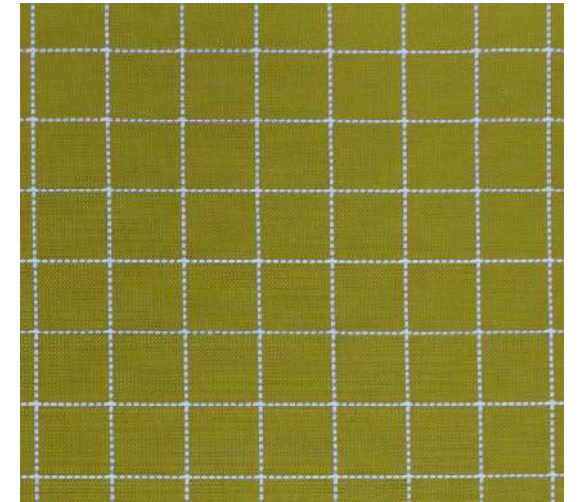
GDT-5776-001 TATIL COBRE



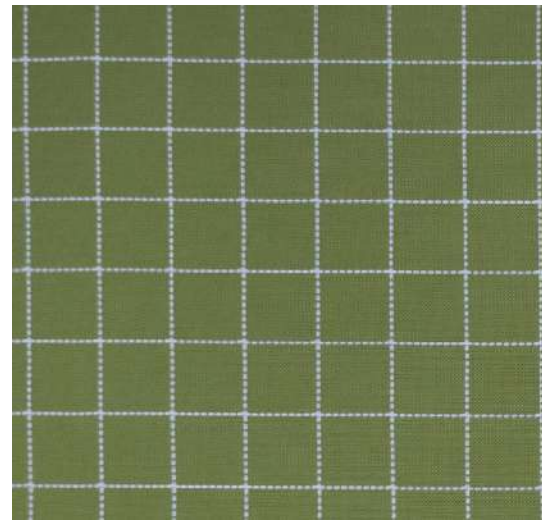
GDT-5776-002 TATIL AMARILLO



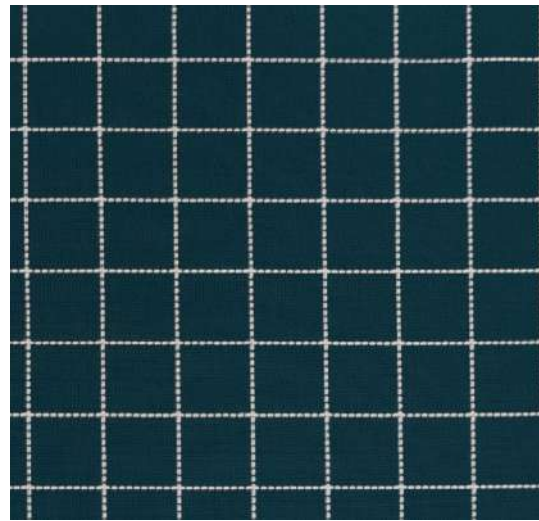
GDT-5776-003 TATIL ROJO



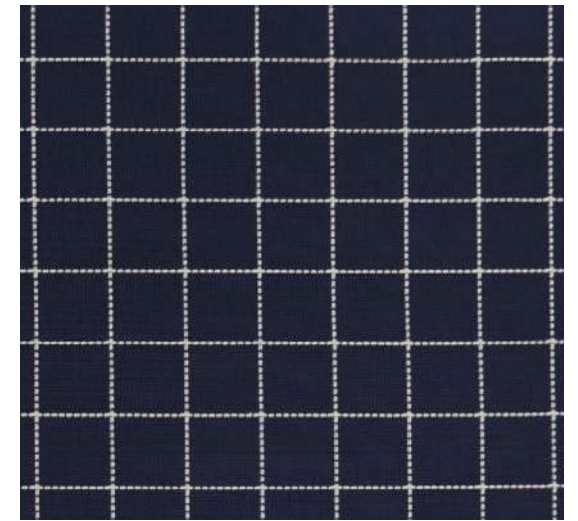
GDT-5776-004 TATIL LIMA



GDT-5776-005 TATIL VERDE OLIVA



GDT-5776-006 TATIL ULTRAMAR



GDT-5776-007 TATIL NAVY

COMPOSITION: 100% PP  
VERTICAL REPEAT: 6,7 CM -2,63"  
HORIZONTAL REPEAT: 6,7 CM -2,63"  
WIDTH: 140 CM/55"  
MARTINDALE: 30.000  
CARE CODE:

